

# CBP Tag Mouse Monoclonal Antibody(Mix-mA™)

## Catalog No: RTA42

### Basic Information

Host species	Mouse
Applications	WB, IP
Species Cross-Reactivity	N/A
Specificity	Antibody can detects CBP recombinant protein.
Recommended dilutions	WB: 1:5,000      IP: 1:200 Optimal dilutions should be determined by the end user.

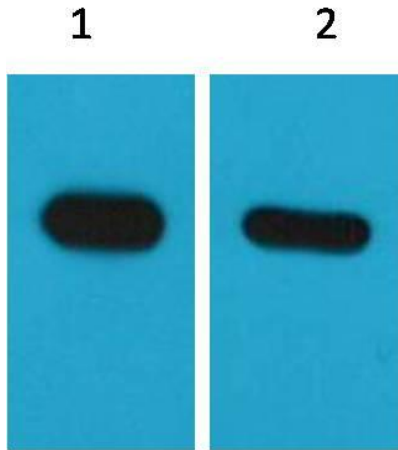
### Applications

Formulation	PBS, pH 7.4, containing 0.02% sodium azide as Preservative and 50% Glycerol.
Storage	Store at -20°C. Avoid repeated freeze-thaw cycles.
Concentration	1 mg/ml
Clonality	Monoclonal

### Background

Alternative Names	calmodulin binding peptide
Observed band	N/A
Human Gene ID	N/A
Human Swiss-Prot Number	N/A
Background	Epitope mapping within the calmodulin binding peptide (CBP) region of the TAP (tandem affinity purification) tag of human.

Selected Validation Data



Western blot analysis of CBP recombinant protein with CBP Tag  
Mouse Monoclonal Antibody(Mix-mA™) diluted at 1) 1:5,000  
2) 1:10,000