

# Nano-Tag9 Mouse Monoclonal Antibody(4B7)

## Catalog No: RTA39

### Basic Information

Host species	Mouse
Applications	WB
Species Cross-Reactivity	ALL
Specificity	Antibody can detects Recombinant Nano-Tag9 protein.
Recommended dilutions	WB: 1:5,000-10,000 Optimal dilutions should be determined by the end user.

### Applications

Formulation	PBS, pH 7.4, containing 0.02% sodium azide as Preservative and 50% Glycerol.
Storage	Store at -20°C. Avoid repeated freeze-thaw cycles.
Concentration	1 mg/ml
Clonality	Monoclonal

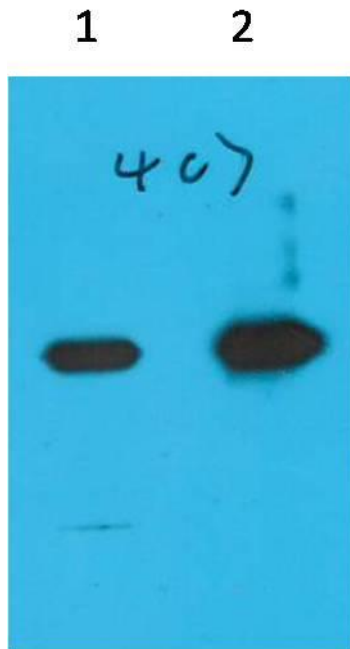
### Background

Alternative Names	N/A
Observed band	N/A
Human Gene ID	N/A
Human Swiss-Prot Number	N/A

Background

The Nano-tag is a new streptavidin-binding peptide for both the purification and the detection of Nano-tagged proteins. This peptide possesses nanomolar-affinity for streptavidin and therefore is termed Nano-tag. The nano-tags have two types, Nano-tag15 (MDVEAWLGARVPLVET) and Nano-tag9 (MDVEAWLGAR), which bind to streptavidin with dissociation constants of 4 nM and 17 nM, respectively.

Selected Validation Data



Western blot analysis of Recombinant Nano-Tag9 Protein with  
Nano-Tag9 Mouse mAb diluted at 1)1:10,000 2)1:5,000