

S1-Tag Mouse Monoclonal Antibody(7B10)

Catalog No: RTA37

Basic Information

Host species	Mouse
Applications	WB
Species Cross-Reactivity	ALL
Specificity	Antibody can detects Recombinant S1-Tag protein.
Recommended dilutions	WB: 1:5,000-10,000 Optimal dilutions should be determined by the end user.

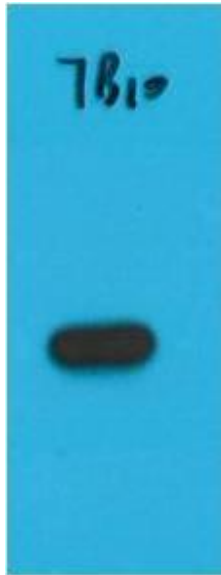
Applications

Formulation	PBS, pH 7.4, containing 0.02% sodium azide as Preservative and 50% Glycerol.
Storage	Store at -20°C. Avoid repeated freeze-thaw cycles.
Concentration	1 mg/ml
Clonality	Monoclonal

Background

Alternative Names	N/A
Observed band	N/A
Human Gene ID	N/A
Human Swiss-Prot Number	N/A
Background	S1 tag is an epitope tag composed of a nine-residue peptide, NANNPDWDF, derived from the hepatitis B virus preS1 region.

Selected Validation Data



Western blot analysis of Recombinant S1-Tag Protein with
S1-Tag Mouse mAb diluted at 1:5,000.