

Flag-Tag Mouse Monoclonal Antibody(2C5)

Catalog No: RTA21

Basic Information

Host species	Mouse
Applications	WB, IP, IF
Species Cross-Reactivity	N/A
Specificity	The Flag tag antibody can recognize C-terminal, internal, and N-terminal Flag-tag fusion proteins.
Recommended dilutions	WB: 1:5,000 IP: 1:200 IF: 1:2000 Optimal dilutions should be determined by the end user.

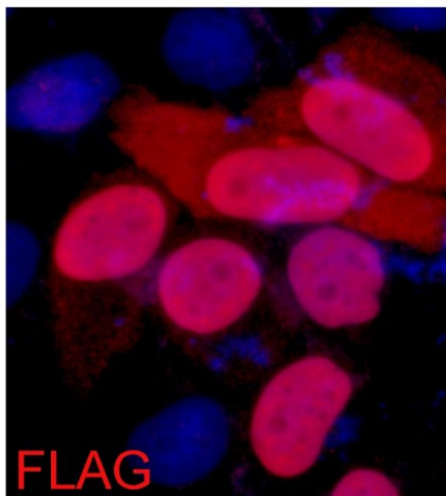
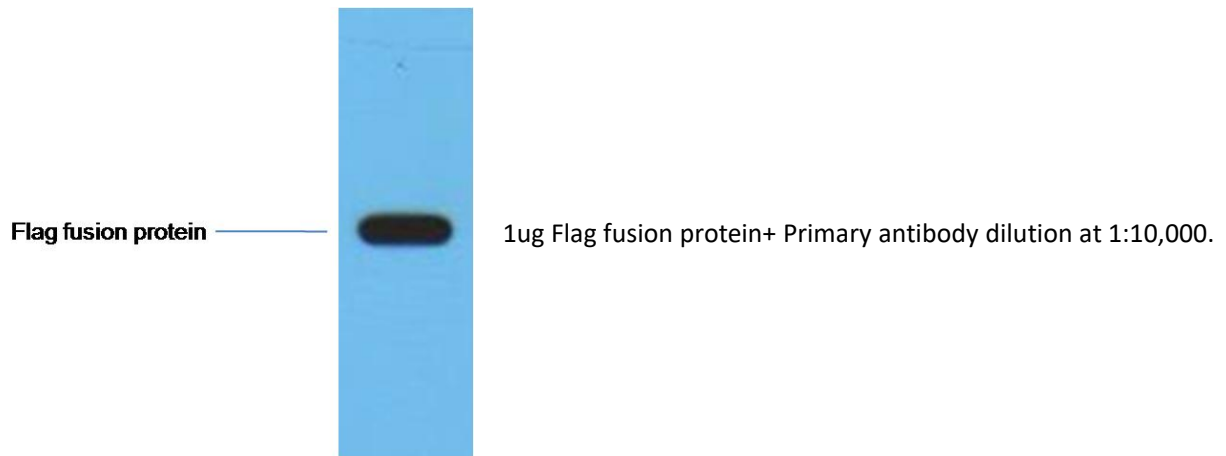
Applications

Formulation	PBS, pH 7.4, containing 0.02% sodium azide as Preservative and 50% Glycerol.
Storage	Store at -20°C. Avoid repeated freeze-thaw cycles.
Concentration	1 mg/ml
Clonality	Monoclonal

Background

Alternative Names	
Observed band	N/A
Human Gene ID	N/A
Human Swiss-Prot Number	N/A
Background	<p>The DYKDDDDK peptide (Flag-tag) is a small component of an epitope which does not appear to interfere with the bioactivity or the biodistribution of the recombinant protein. It has been used extensively as a general epitope tag in expression vectors. It can be used for affinity chromatography, then used to separate recombinant, overexpressed protein from wild-type protein expressed by the host organism. It can also be used in the isolation of protein complexes with multiple subunits. A Flag-tag can be used in many different assays that require recognition by an antibody. If there is no antibody against the studied protein, adding a Flag-tag to this protein allows one to follow the protein with an antibody against the Flag sequence.</p>

Selected Validation Data



IF analysis of 293 cells transfected with a Flag-tag protein,
using anti-FlagTag Mouse mAb at a 1:2000 dilution (blue DAPI,
red anti-Flag)