

Yeast GAPDH Rabbit Polyclonal Antibody

Catalog No: RCA70

Basic Information

Host species	Rabbit
Applications	WB
Species Cross-Reactivity	Yeast (H, M, R)
Specificity	Antibody can detect endogenous Yeast GAPDH protein, predict Cross-Reactivity with Human, Mouse, Rat.
Recommended dilutions	WB:1:10,000-20,000 Optimal dilutions should be determined by the end user.

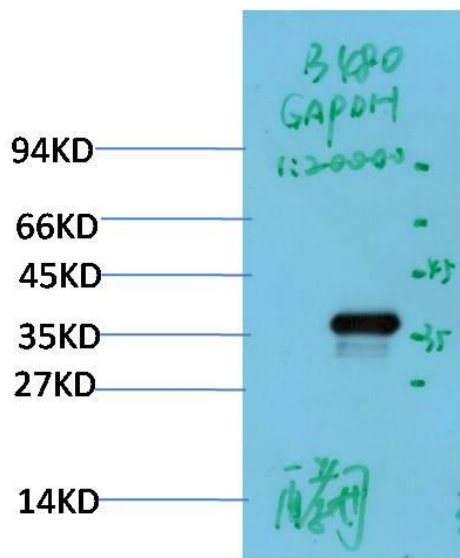
Applications

Formulation	Antigen Affinity Purified IgG in PBS, pH 7.4, containing 0.02% sodium azide as Preservative and 50% Glycerol.
Storage	Store at -20°C. Avoid repeated freeze-thaw cycles.
Concentration	1 mg/ml
Clonality	Polyclonal

Background

Alternative Names	G3PDH antibody, BARS-38 antibody, Glyceraldehyde 3 phosphate dehydrogenase antibody
Observed band	38
Human Gene ID	2597
Human Swiss-Prot Number	P00360
Background	Glyceraldehyde 3 phosphate dehydrogenase (GAPDH) is well known as one of the key enzymes involved in glycolysis. GAPDH is constitutively expressed in almost all tissues at high levels, therefore antibodies against GAPDH are useful as loading controls for Western Blotting. Some physiological factors, such as hypoxia and diabetes, increase GAPDH expression in certain cell types.

Selected Validation Data



Western blot analysis of Yeast Lysate using Yeast GAPDH Rabbit pAb diluted at 1:20,000.