

# Drosophila Melanogaster $\beta$ -actin Rabbit Polyclonal Antibody

## Catalog No: RCA68

### Basic Information

Host species	Rabbit
Applications	WB
Species Cross-Reactivity	Drosophila Melanogaster (H, M, R)
Specificity	Antibody can detect endogenous Drosophila Melanogaster $\beta$ -actin protein, predict Cross-Reactivity with Human, Mouse, Rat.
Recommended dilutions	WB:1:2,000-5,000 Optimal dilutions should be determined by the end user.

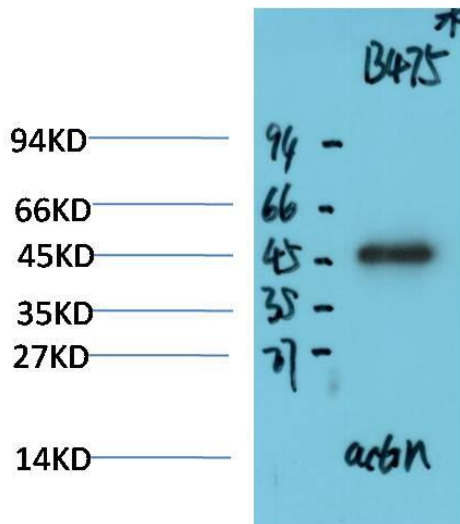
### Applications

Formulation	Antigen Affinity Purified IgG in PBS, pH 7.4, containing 0.02% sodium azide as Preservative and 50% Glycerol.
Storage	Store at -20°C. Avoid repeated freeze-thaw cycles.
Concentration	1 mg/ml
Clonality	Polyclonal

### Background

Alternative Names	actin antibody, b-actin antibody, beta-actin antibody
Observed band	43
Human Gene ID	31521
Human Swiss-Prot Number	P10987
Background	<p><math>\beta</math>-actin is one of six different actin isoforms that have been identified. The actin molecules found in cells of various species and tissues tend to be very similar in their immunological and physical properties. Therefore, antibodies against <math>\beta</math>-actin are useful as loading controls for Western Blotting. However it should be noted that levels of <math>\beta</math>-actin may not be stable in certain cells. For example, expression of <math>\beta</math>-actin in adipose tissue is very low and therefore <math>\beta</math>-actin should not be used as loading control for these tissues.</p>

Selected Validation Data



Western blot analysis of Drosophila Melanogaster whole body Lysate using Drosophila Melanogaster  $\beta$ -actin Rabbit pAb diluted at 1:4,000.