

C. Elegans α -tubulin Rabbit Polyclonal Antibody

Catalog No: RCA66

Basic Information

Host species	Rabbit
Applications	WB
Species Cross-Reactivity	C. Elegans (H, M, R)
Specificity	Antibody can detect endogenous C. Elegans α -tubulin protein, predict Cross-Reactivity with Human, Mouse, Rat.
Recommended dilutions	WB:1:1,000-2,000 Optimal dilutions should be determined by the end user.

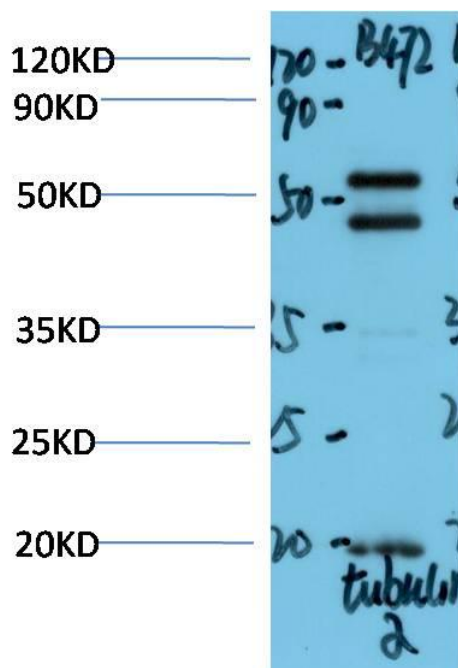
Applications

Formulation	Antigen Affinity Purified IgG in PBS, pH 7.4, containing 0.02% sodium azide as Preservative and 50% Glycerol.
Storage	Store at -20°C. Avoid repeated freeze-thaw cycles.
Concentration	1 mg/ml
Clonality	Polyclonal

Background

Alternative Names	alpha tubulin 2, B alpha 1, H2 alpha, Hum a tub 1, TUBA1, TUBA1A, Tubulin alpha 1 chain
Observed band	52
Human Gene ID	172831
Human Swiss-Prot Number	H2L2E8
Background	Tubulin is one of several members of a small family of globular proteins. The tubulin superfamily includes five distinct families, the alpha-, beta-, gamma-, delta-, and epsilon-tubulins. The most common members of the tubulin family are α -tubulin and β -tubulin, the proteins that make up microtubules. Each has a molecular weight of approximately 55 KD. Microtubules are assembled from dimers of α - and β -tubulin.

Selected Validation Data



Western blot analysis of C.Elegans whole body Lysate using C. Elegans α -tubulin Rabbit pAb diluted at 1:4,000.