

C. Elegans β -actin Rabbit Polyclonal Antibody

Catalog No: RCA64

Basic Information

| | |
|--------------------------|--|
| Host species | Rabbit |
| Applications | WB |
| Species Cross-Reactivity | C. Elegans (H, M, R) |
| Specificity | Antibody can detect endogenous C. Elegans β -actin protein, predict Cross-Reactivity with Human, Mouse, Rat. |
| Recommended dilutions | WB:1:10,000-50,000 Optimal dilutions should be determined by the end user. |

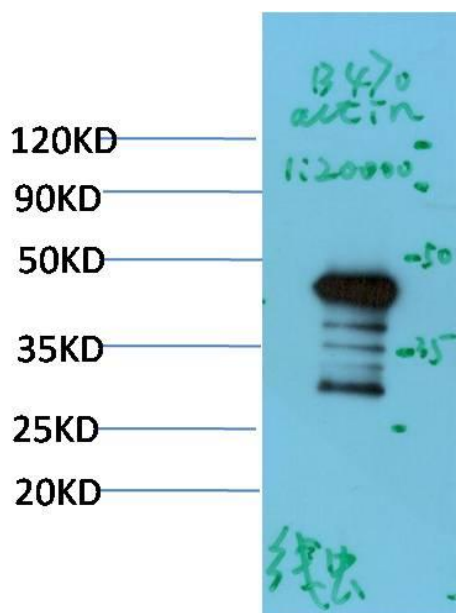
Applications

| | |
|---------------|---|
| Formulation | Antigen Affinity Purified IgG in PBS, pH 7.4, containing 0.02% sodium azide as Preservative and 50% Glycerol. |
| Storage | Store at -20°C. Avoid repeated freeze-thaw cycles. |
| Concentration | 1 mg/ml |
| Clonality | Polyclonal |

Background

| | |
|-------------------------|---|
| Alternative Names | actin antibody, b-actin antibody, beta-actin antibody |
| Observed band | 43 |
| Human Gene ID | 179535 |
| Human Swiss-Prot Number | P0DM41 |
| Background | β -actin is one of six different actin isoforms that have been identified. The actin molecules found in cells of various species and tissues tend to be very similar in their immunological and physical properties. Therefore, antibodies against β -actin are useful as loading controls for Western Blotting. However it should be noted that levels of β -actin may not be stable in certain cells. For example, expression of β -actin in adipose tissue is very low and therefore β -actin should not be used as loading control for these tissues. |

Selected Validation Data



Western blot analysis of C.Elegans whole body Lysate using C. Elegans β-actin Rabbit pAb diluted at 1:20,000.