

GAPDH Rabbit Polyclonal Antibody(G04-For Bacterium)

Catalog No: RCA56

Basic Information

Host species	Rabbit
Applications	WB, IHC
Species Cross-Reactivity	H, R, M, Bacterium
Specificity	Antibody can detect endogenous GAPDH protein. RA20175 detect Fusarium graminearum Endogenous GAPDH protein.
Recommended dilutions	WB: 1:5,000-10,000 IHC: 1:200-500 Optimal dilutions should be determined by the end user.

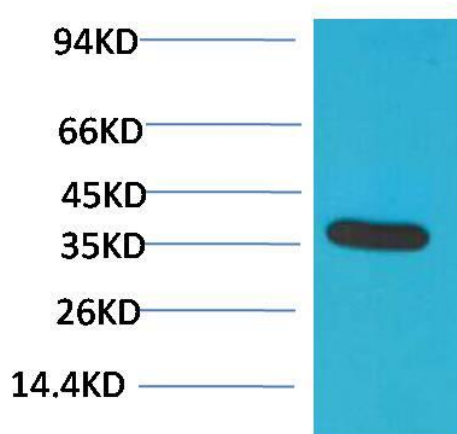
Applications

Formulation	Antigen Affinity Purified IgG in PBS, pH 7.4, containing 0.02% sodium azide as Preservative and 50% Glycerol.
Storage	Store at -20°C. Avoid repeated freeze-thaw cycles.
Concentration	1 mg/ml
Clonality	Polyclonal

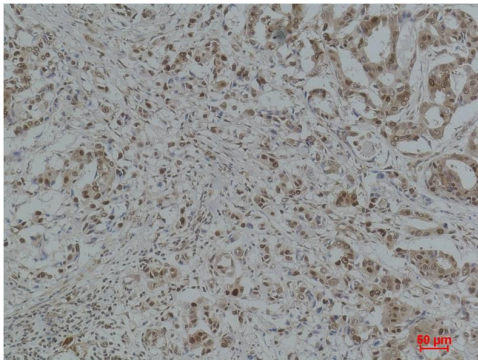
Background

Alternative Names	G3PDH antibody, BARS-38 antibody, Glyceraldehyde 3 phosphate dehydrogenase antibody
Observed band	37
Human Gene ID	2597
Human Swiss-Prot Number	P04406
Background	Glyceraldehyde 3 phosphate dehydrogenase (GAPDH) is well known as one of the key enzymes involved in glycolysis. GAPDH is constitutively expressed in almost all tissues at high levels, therefore antibodies against GAPDH are useful as loading controls for Western Blotting. Some physiological factors, such as hypoxia and diabetes, increase GAPDH expression in certain cell types.

Selected Validation Data



Western blot analysis of HeLa with GAPDH Rabbit pAb diluted at 1:10,000.



Immunohistochemical analysis of paraffin-embedded Human Breast Carcinoma using GAPDH Rabbit pAb diluted at 1:500.