

Bovine Serum Albumin Rabbit Polyclonal Antibody

Catalog No: RCA52

Basic Information

Host species	Rabbit
Applications	WB, ELISA
Species Cross-Reactivity	Cow, H
Specificity	The Bovine Serum Albumin antibody can detects endogenous BSA protein.
Recommended dilutions	WB: 1:2,000-5,000 Optimal dilutions should be determined by the end user.

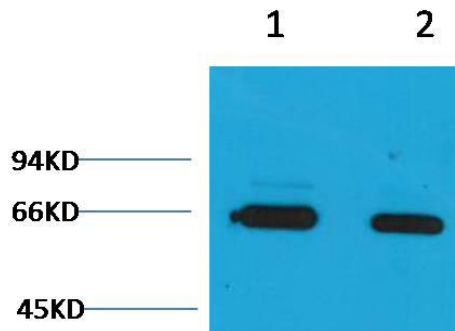
Applications

Formulation	PBS, pH 7.4, containing 0.02% sodium azide as Preservative and 50% Glycerol.
Storage	Store at -20°C. Avoid repeated freeze-thaw cycles.
Concentration	1 mg/ml
Clonality	Polyclonal

Background

Alternative Names	BSA antibody, ALB antibody, Albumin antibody, HSA antibody, PRO0883 antibody, Serum Albumin antibody
Observed band	66
Human Gene ID	280717
Human Swiss-Prot Number	P02769
Background	Bovine serum albumin (also known as BSA or "Fraction V") is a serum albumin protein derived from cows. It is often used as a protein concentration standard in lab experiments. Albumin is a soluble, monomeric protein which comprises about one-half of the blood serum protein.

Selected Validation Data



Western blot analysis of Bovine Serum Albumin with RCA52
Rabbit pAb diluted at
1) 1:2,000
2) 1:5,000