

β III Tubulin Rabbit Polyclonal Antibody

Catalog No: RCA51

Basic Information

Host species	Rabbit
Applications	WB, IHC
Species Cross-Reactivity	H, R, M
Specificity	The β III tubulin Mouse Monoclonal Antibody can detect endogenous β III tubulin protein.
Recommended dilutions	WB: 1:2,000-5,000 IHC: 1:200-500 Optimal dilutions should be determined by the end user.

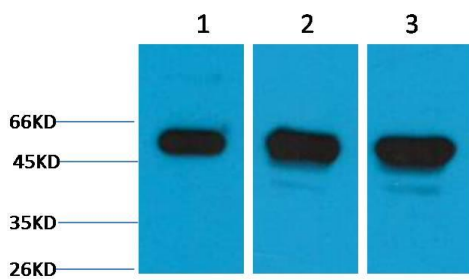
Applications

Formulation	PBS, pH 7.4, containing 0.02% sodium azide as Preservative and 50% Glycerol.
Storage	Store at -20°C. Avoid repeated freeze-thaw cycles.
Concentration	1 mg/ml
Clonality	Polyclonal

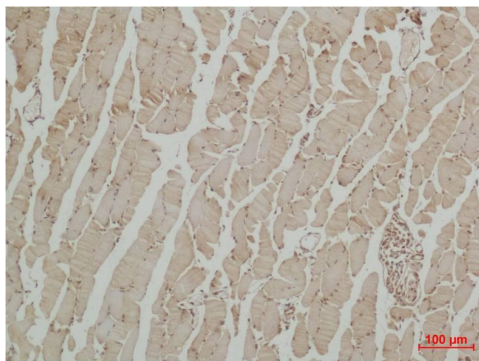
Background

Alternative Names	beta 3 tubulin antibody, CDCBM antibody, TUBB3 antibody, Tubulin beta III antibody
Observed band	50
Human Gene ID	10381
Human Swiss-Prot Number	Q13509
Background	Tubulin is the major constituent of microtubules. It exists as a heterodimer consisting of an alpha and a beta subunit. TUBB3 plays a critical role in proper axon guidance and maintenance.

Selected Validation Data



Western blot analysis of 1) Hela, 2) Mouse Brain, 3) Rat Brain tissue with β III Tubulin Rabbit pAb diluted at 1:5,000.



Immunohistochemical analysis of paraffin-embedded Mouse Skeletal Muscle Tissue using β III Tubulin Rabbit pAb diluted at 1:500.