

# Vinculin Rabbit Polyclonal Antibody

## Catalog No: RCA49

### Basic Information

Host species	Rabbit
Applications	WB, IHC
Species Cross-Reactivity	H, R, M
Specificity	The Vinculin antibody can detects endogenous Vinculin protein.
Recommended dilutions	WB: 1:1,000 -2,000      IHC: 1:200-500 Optimal dilutions should be determined by the end user.

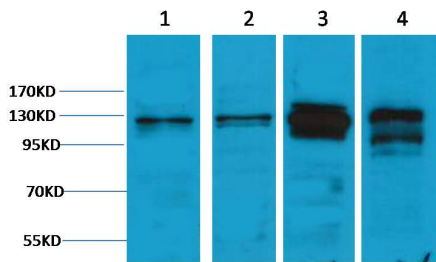
### Applications

Formulation	PBS, pH 7.4, containing 0.02% sodium azide as Preservative and 50% Glycerol.
Storage	Store at -20°C. Avoid repeated freeze-thaw cycles.
Concentration	1 mg/ml
Clonality	Polyclonal

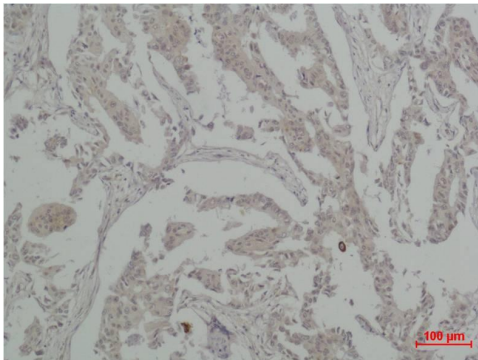
### Background

Alternative Names	CMD1W antibody, CMH15 antibody, metavinculin antibody, MVCL antibody, VINC antibody
Observed band	130
Human Gene ID	7414
Human Swiss-Prot Number	P18206
Background	Vinculin is a membrane-cytoskeletal protein in focal adhesion plaques that is involved in linkage of integrin adhesion molecules to the actin cytoskeleton. Vinculin is a cytoskeletal protein associated with cell-cell and cell-matrix junctions, where it is thought to function as one of several interacting proteins involved in anchoring F-actin to the membrane.

## Selected Validation Data



Western blot analysis of 1) HeLa, 2)K562, 3) Mouse Brain, 4)Rat Brain tissue with Vinculin Rabbit pAb diluted at 1:1,000.



Immunohistochemical analysis of paraffin-embedded human Breast carcinoma using Vinculin Rabbit pAb diluted at 1:500.