

Plant actin Mouse Monoclonal Antibody(2E3)

Catalog No: RCA47

Basic Information

Host species	Mouse
Applications	WB
Species Cross-Reactivity	Various Plants
Specificity	Antibody can detects endogenous various plants protein.
Recommended dilutions	WB: 1:5,000 Optimal dilutions should be determined by the end user.

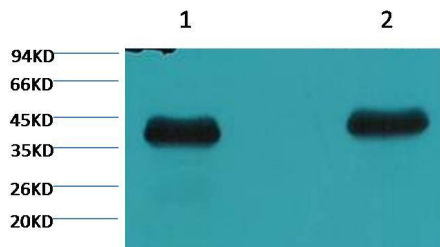
Applications

Formulation	PBS, pH 7.4, containing 0.02% sodium azide as Preservative and 50% Glycerol.
Storage	Store at -20°C. Avoid repeated freeze-thaw cycles.
Concentration	1 mg/ml
Clonality	Monoclonal

Background

Alternative Names	N/A
Observed band	43
Human Gene ID	
Human Swiss-Prot Number	N/A
Background	Actin is a highly conserved protein and an essential component of cell cytoskeleton and plays an important role in cytoplasmic streaming, cell shape determination, cell division, organelle movement and extension growth. Preferentially expressed in young and expanding tissues, floral organ primordia, developing seeds and emerging inflorescence. Antibodies against plant Actin are useful as loading controls for Western Blotting.

Selected Validation Data



Western blot analysis of Arabidopsis with Plant actin Mouse Monoclonal Antibody(2E3) diluted at 1) 1:5,000 2) 1:10,000