

Flag Mouse Monoclonal Antibody(2C5)-HRP conjugated

Catalog No: RCA41

Basic Information

Host species	Mouse
Applications	WB
Species Cross-Reactivity	N/A
Specificity	The Flag tag antibody can recognize C-terminal, internal, and N-terminal Flag-tag fusion proteins.
Recommended dilutions	WB: 1:5,000-10,000 Optimal dilutions should be determined by the end user.

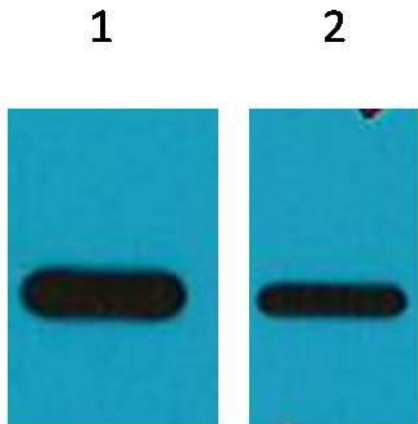
Applications

Formulation	PBS, pH 7.4, containing 0.02% Kathon as Preservative and 50% Glycerol.
Storage	Store at -20°C. Avoid repeated freeze-thaw cycles.
Concentration	1 mg/ml
Clonality	Monoclonal

Background

Alternative Names	DDDDK epitope tag, DYKDDDDK epitope tag, ECS epitope tag
Observed band	N/A
Human Gene ID	
Human Swiss-Prot Number	N/A
Background	The DYKDDDDK peptide (Flag-tag) is a small component of an epitope which does not appear to interfere with the bioactivity or the biodistribution of the recombinant protein. It has been used extensively as a general epitope tag in expression vectors. It can be used for affinity chromatography, then used to separate recombinant, overexpressed protein from wild-type protein expressed by the host organism. It can also be used in the isolation of protein complexes with multiple subunits. A Flag-tag can be used in many different assays that require recognition by an antibody. If there is no antibody against the studied protein, adding a Flag-tag to this protein allows one to follow the protein with an antibody against the Flag sequence.

Selected Validation Data



Western blot analysis of Recombinant protein with RCA41
diluted at 1) 1:5,000 2) 1:10,000