

β -tubulin Mouse Monoclonal Antibody(M7)

Catalog No: RCA38

Basic Information

Host species	Mouse
Applications	WB, IF, IHC
Species Cross-Reactivity	H, R, M
Specificity	The β -tubulin antibody can detect endogenous β -tubulin protein.
Recommended dilutions	WB: 1:5,000 -10,000 IF: 1:100-200 IHC: 1:200-500 Optimal dilutions should be determined by the end user.

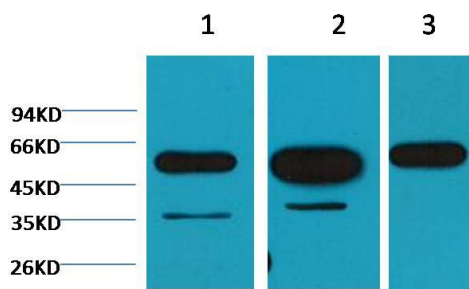
Applications

Formulation	PBS, pH 7.4, containing 0.02% sodium azide as Preservative and 50% Glycerol.
Storage	Store at -20°C. Avoid repeated freeze-thaw cycles.
Concentration	1 mg/ml
Clonality	Monoclonal

Background

Alternative Names	Beta 4 tubulin, TBB5, TUBB2, TUBB2A, tubulin beta 2A, beta tubulin, tubulin beta chain
Observed band	55
Human Gene ID	203068
Human Swiss-Prot Number	P07437
Background	Microtubules are constituent parts of the mitotic apparatus, cilia, flagella, and elements of the cytoskeleton. They consist principally of 2 soluble proteins, alpha- and beta-tubulin, each of about 55,000 Da. Antibodies against beta Tubulin are useful as loading controls for Western Blotting. However it should be noted that levels of β -Tubulin may not be stable in certain cells. For example, expression of β -Tubulin in adipose tissue is very low and therefore β -Tubulin should not be used as loading control for these tissues.

Selected Validation Data



Western blot analysis of 1) Hela, 2) Mouse Brain tissue, 3) Rat Brain tissue with β tubulin Mouse mAb diluted at 1:5,000.



Immunohistochemical analysis of paraffin-embedded Human Tonsil Tissue using β tubulin Mouse mAb diluted at 1:500.