

β I tubulin Mouse Monoclonal Antibody(3F7)

Catalog No: RCA28

Basic Information

Host species	Mouse
Applications	WB, IHC
Species Cross-Reactivity	H, R, M
Specificity	The β I tubulin antibody can recognize endogenous β I tubulin proteins.
Recommended dilutions	WB: 1:5,000-10,000 IHC: 1:200-500 Optimal dilutions should be determined by the end user.

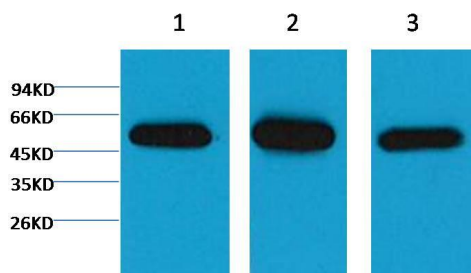
Applications

Formulation	PBS, pH 7.4, containing 0.02% sodium azide as Preservative and 50% Glycerol.
Storage	Store at -20°C. Avoid repeated freeze-thaw cycles.
Concentration	1 mg/ml
Clonality	Monoclonal

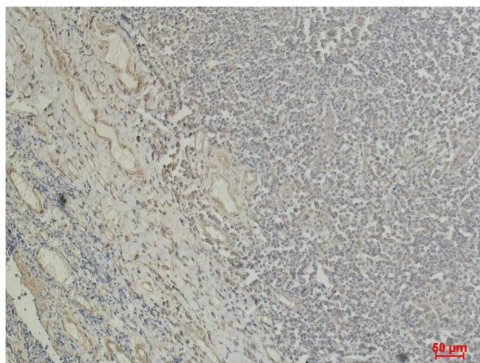
Background

Alternative Names	beta I tubulin, TBB1, TUBB1, Tubulin beta 1, Class VI beta tubulin
Observed band	50
Human Gene ID	81027
Human Swiss-Prot Number	Q9H4B7
Background	Tubulin is one of several members of a small family of globular proteins. The tubulin superfamily includes five distinct families, the alpha-, beta-, gamma-, delta-, and epsilon-tubulins. The most common members of the tubulin family are α -tubulin and β -tubulin, the proteins that make up microtubules. Each has a molecular weight of approximately 55 KD. Microtubules are assembled from dimers of α - and β -tubulin.

Selected Validation Data



Western blot analysis of 1) Hela, 2) Mouse Brain Tissue, 3) Rat Brain Tissue with β I tubulin Mouse Monoclonal Antibody(3F7) diluted at 1:5,000.



Immunohistochemical analysis of paraffin-embedded Human Tonsil Tissue using β I tubulin Mouse mAb diluted at 1:500.