

# $\alpha$ tubulin Mouse Monoclonal Antibody (8F11)

## Catalog No: RCA26

### Basic Information

Host species	Mouse
Applications	WB, IP, IF, IHC
Species Cross-Reactivity	H, R, M
Specificity	The $\alpha$ -tubulin antibody can detects endogenous $\alpha$ -tubulin protein.
Recommended dilutions	WB: 1:5,000-10,000      IP:1:200      IF: 1:100-200      IHC: 1:200-500 Optimal dilutions should be determined by the end user.

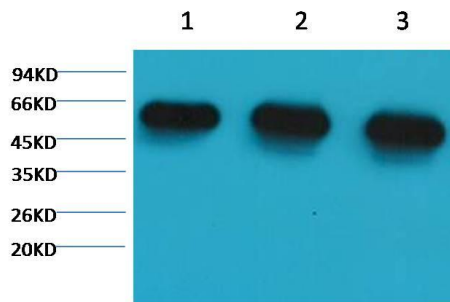
### Applications

Formulation	PBS, pH 7.4, containing 0.02% sodium azide as Preservative and 50% Glycerol.
Storage	Store at -20°C. Avoid repeated freeze-thaw cycles.
Concentration	1 mg/ml
Clonality	Monoclonal

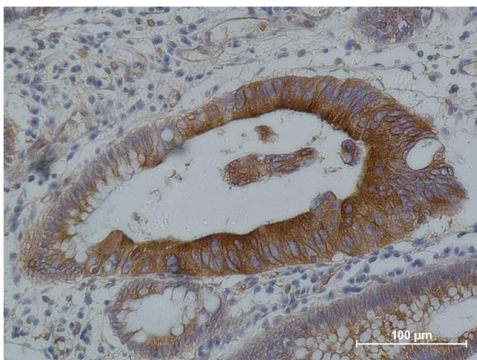
### Background

Alternative Names	alpha tubulin 2, B alpha 1, H2 alpha, Hum a tub 1, TUBA1, TUBA1A, Tubulin alpha 1chain
Observed band	52
Human Gene ID	7277
Human Swiss-Prot Number	P68363
Background	Tubulin is one of several members of a small family of globular proteins. The tubulin superfamily includes five distinct families, the alpha-, beta-, gamma-, delta-, and epsilon-tubulins. The most common members of the tubulin family are $\alpha$ -tubulin and $\beta$ -tubulin, the proteins that make up microtubules. Each has a molecular weight of approximately 55 KD. Microtubules are assembled from dimers of $\alpha$ - and $\beta$ -tubulin.

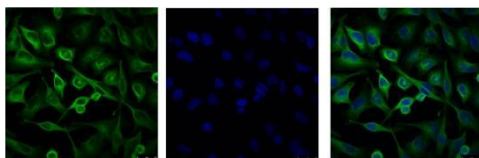
## Selected Validation Data



Western blot analysis of 1) HeLa, 2) Rat Brain Tissue, 3) Mouse Brain Tissue with  $\alpha$  tubulin Mouse mAb diluted at 1:5,000.



Immunohistochemical analysis of paraffin-embedded human Colon carcinoma using  $\alpha$  tubulin Mouse mAb diluted at 1:500.



IF analysis of HeLa with  $\alpha$  tubulin Mouse mAb (Left) and DAPI (Right) diluted at 1:100.

