

# GAPDH Mouse Monoclonal Antibody(2B8)

## Catalog No: RCA21

### Basic Information

Host species	Mouse
Applications	WB, IHC
Species Cross-Reactivity	H, R, M, Mk, Dg, Ch, Hm, Rb, Pg, Sh Insect, Yeast
Specificity	Antibody can detects endogenous GAPDH protein.
Recommended dilutions	WB: 1:5,000      IHC: 1:200 Optimal dilutions should be determined by the end user.

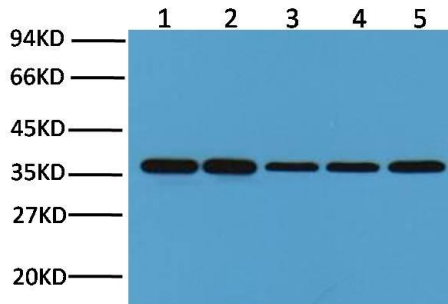
### Applications

Formulation	PBS, pH 7.4, containing 0.02% sodium azide as Preservative and 50% Glycerol.
Storage	Store at -20°C. Avoid repeated freeze-thaw cycles.
Concentration	1 mg/ml
Clonality	Monoclonal

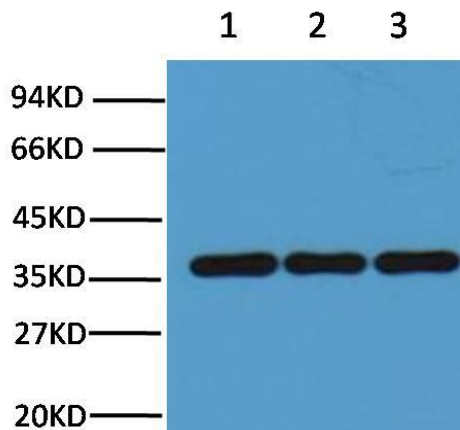
### Background

Alternative Names	
Observed band	37
Human Gene ID	2597
Human Swiss-Prot Number	P04406
Background	Glyceraldehyde 3 phosphate dehydrogenase (GAPDH) is well known as one of the key enzymes involved in glycolysis. GAPDH is constitutively expressed in almost all tissues at high levels, therefore antibodies against GAPDH are useful as loading controls for Western Blotting. Some physiological factors, such as hypoxia and diabetes, increase GAPDH expression in certain cell types.

## Selected Validation Data



Western blot analysis of Hela (1), Rat brain (2), Rabbit Muscle(3), Sheep Muscle(4), and Mouse brain (5) with GAPDH mouse mAb(2B8) diluted at 1:10,000.



Western blot analysis of Chicken Muscle (1), Hamster Lung (2), Pig Heart(3), with GAPDH mouse mAb(2B8) diluted at 1:10,000.