

# $\beta$ II tubulin Mouse Monoclonal Antibody(Mix-mA™) (Rodent Preferred)

## Catalog No: RCA10

### Basic Information

Host species	Mouse
Applications	WB
Species Cross-Reactivity	R, M, H
Specificity	The $\beta$ II tubulin Mouse Monoclonal Antibody can detect endogenous $\beta$ II tubulin protein.
Recommended dilutions	WB: 1:50,000-100,000      IP:1:200 Optimal dilutions should be determined by the end user.

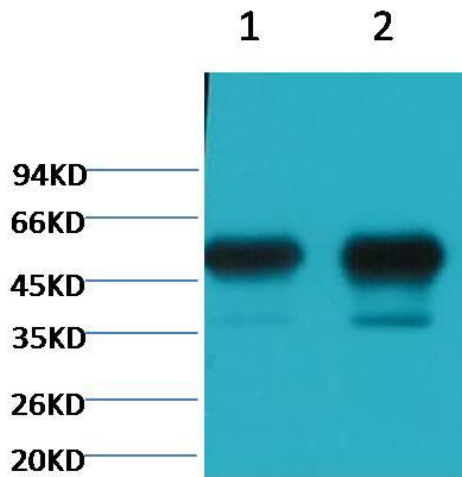
### Applications

Formulation	PBS, pH 7.4, containing 0.02% sodium azide as Preservative and 50% Glycerol.
Storage	Store at -20°C. Avoid repeated freeze-thaw cycles.
Concentration	1 mg/ml
Clonality	Monoclonal

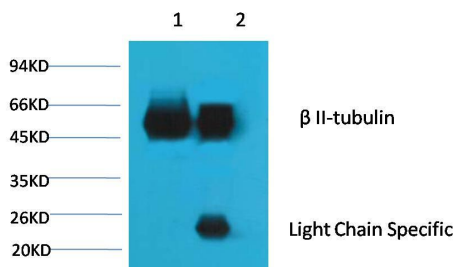
### Background

Alternative Names	class II beta tubulin isotype antibody, TUBB 2 antibody, Tubulin beta 2 antibody
Observed band	50
Human Gene ID	7280
Human Swiss-Prot Number	P68371
Background	Tubulin is the major constituent of microtubules. It exists as a heterodimer consisting of an alpha and a beta subunit. Class II beta tubulin is the major form of tubulin beta in neurons, although it is not neuronal specific. It is found in many other tissues including lung tissue and Schwann cells.

Selected Validation Data



Western blot analysis of 1) Mouse Brain tissue, 2) Rat Brain tissue with  $\beta$  II tubulin Mouse Monoclonal Antibody diluted at 1:100,000.



1、 Input: Mouse Brain Tissue Lysate

2、 IP product: IP dilute 1:200

Western blot analysis: primary antibody :  $\beta$  II tubulin Mouse Monoclonal Antibody 1:10,000

Secondary antibody: Goat anti-Mouse IgG, Light chain specific (S003), 1:5,000