

Cofilin 1 Rabbit Polyclonal Antibody(CFL1)

Catalog No: RA20415

Basic Information

Host species	Rabbit
Applications	N/A
Species Cross-Reactivity	N/A
Specificity	Antibody can detects Human endogenous cofilin proteins.
Recommended dilutions	WB: 1:2,000-5,000 Optimal dilutions should be determined by the end user.

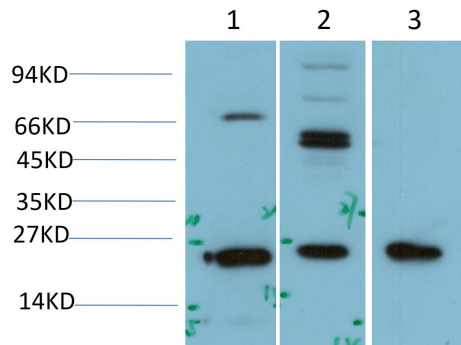
Applications

Formulation	PBS, pH 7.4, containing 0.02% sodium azide as Preservative and 50% Glycerol.
Storage	Store at -20°C. Avoid repeated freeze-thaw cycles.
Concentration	1 mg/ml
Clonality	Polyclonal

Background

Alternative Names	CFL1; CFL; Cofilin-1; 18 kDa phosphoprotein; p18; Cofilin; non-muscle isoform
Observed band	~19
Human Gene ID	1072
Human Swiss-Prot Number	P23528
Background	Cofilin 1(CFL1) Homo sapiens The protein encoded by this gene can polymerize and depolymerize F-actin and G-actin in a pH-dependent manner. Increased phosphorylation of this protein by LIM kinase aids in Rho-induced reorganization of the actin cytoskeleton. Cofilin is a widely distributed intracellular actin-modulating protein that binds and depolymerizes filamentous F-actin and inhibits the polymerization of monomeric G-actin in a pH-dependent manner. It is involved in the translocation of actin-cofilin complex from cytoplasm to nucleus.

Selected Validation Data



Western blot analysis of 1)Hela Cell, 2) 3T3 Cell, 3)PC12 Cell Lysate using Cofilin Rabbit Polyclonal Antibody diluted at 1:2,000.