

CRISPR-Cas9 Rabbit Polyclonal Antibody

Catalog No: RA20400

Basic Information

Host species	Rabbit
Applications	WB
Species Cross-Reactivity	Staphylococcus aureus
Specificity	Antibody can detects Staphylococcus aureus Cas9 proteins.
Recommended dilutions	WB: 1:2,000-5,000 Optimal dilutions should be determined by the end user.

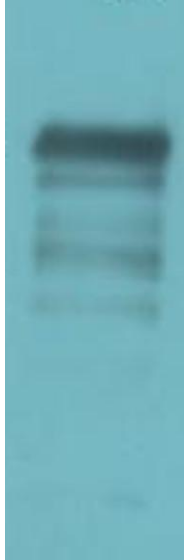
Applications

Formulation	PBS, pH 7.4, containing 0.02% sodium azide as Preservative and 50% Glycerol.
Storage	Store at -20°C. Avoid repeated freeze-thaw cycles.
Concentration	1 mg/ml
Clonality	Polyclonal

Background

Alternative Names	csn1, SpyCas9
Observed band	KD
Human Gene ID	0
Human Swiss-Prot Number	J7RUA5
Background	CRISPR (clustered regularly interspaced short palindromic repeat) is an adaptive immune system that provides protection against mobile genetic elements (viruses, transposable elements and conjugative plasmids). Cas9 probably recognizes a short motif in the CRISPR repeat sequences.

Selected Validation Data



Western blot analysis of Recombinant *Staphylococcus aureus* Cas9 protein using CRISPR-Cas9 Rabbit pAb diluted at 1:4,000.