

# Plant GST Rabbit Polyclonal Antibody

## Catalog No: RA20388

### Basic Information

Host species	Rabbit
Applications	WB
Species Cross-Reactivity	Nicotiana tabacum
Specificity	The Plant GST antibody can recognize endogenous Plant GST proteins.
Recommended dilutions	WB: 1:3,000-10,000 Optimal dilutions should be determined by the end user.

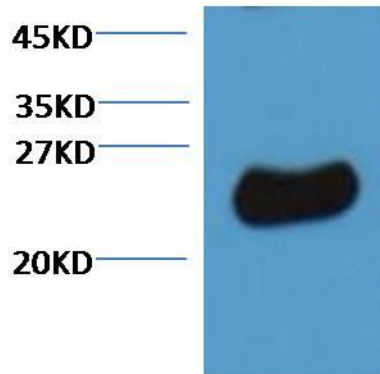
### Applications

Formulation	PBS, pH 7.4, containing 0.02% sodium azide as Preservative and 50% Glycerol.
Storage	Store at -20°C. Avoid repeated freeze-thaw cycles.
Concentration	1 mg/ml
Clonality	Polyclonal

### Background

Alternative Names	
Observed band	24
Human Gene ID	
Human Swiss-Prot Number	N/A
Background	The soluble glutathione transferases (GSTs) are encoded by a large and diverse gene family in plants. GSTs are predominantly expressed in the cytosol, where their GSH-dependent catalytic functions include the conjugation and resulting detoxification of herbicides, the reduction of organic hydroperoxides formed during oxidative stress and the isomerization of maleylacetoacetate to fumarylacetoacetate, a key step in the catabolism of tyrosine. GSTs also have non-catalytic roles, binding flavonoid natural products in the cytosol prior to their deposition in the vacuole.

Selected Validation Data



10ug total Nicotiana tabacum lysate + primary antibody dilute  
at 1:3000