

ECFP Mouse Polyclonal Antibody

Catalog No: RA20387

Basic Information

Host species	Mouse
Applications	WB, IHC, IF
Species Cross-Reactivity	N/A
Specificity	The ECFP Antibody can detect ECFP & CFP tag protein.
Recommended dilutions	WB: 1:2,000-5,000 IHC: 1:200 IF: 1:200 Optimal dilutions should be determined by the end user.

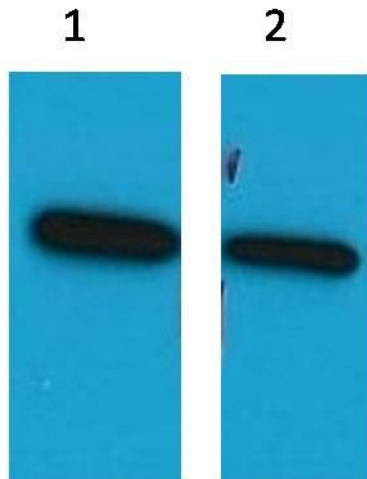
Applications

Formulation	PBS, pH 7.4, containing 0.02% sodium azide as Preservative and 50% Glycerol.
Storage	Store at -20°C. Avoid repeated freeze-thaw cycles.
Concentration	1 mg/ml
Clonality	Polyclonal

Background

Alternative Names	Cyan fluorescent protein, Enhanced Cyan fluorescent protein
Observed band	N/A
Human Gene ID	
Human Swiss-Prot Number	N/A
Background	Cyan Fluorescent Protein (CFP) is a genetic mutant of green fluorescent protein (GFP) originally derived from the jellyfish <i>Aequorea victoria</i> .

Selected Validation Data



Western blot analysis of ECFP Recombinant protein with ECFP
Mouse Polyclonal Antibody diluted at 1) 1:5,000 2) 1:10,000