

EYFP Mouse Polyclonal Antibody

Catalog No: RA20384

Basic Information

| | |
|--------------------------|--|
| Host species | Mouse |
| Applications | WB, IHC, IF |
| Species Cross-Reactivity | N/A |
| Specificity | The EYFP tag antibody can recognize EYFP and YFP tag fusion proteins. |
| Recommended dilutions | WB: 1:1,000 -3,000 IHC: 1:100 IF: 1:100 Optimal dilutions should be determined by the end user. |

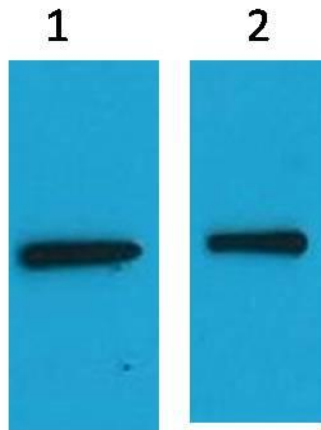
Applications

| | |
|---------------|--|
| Formulation | PBS, pH 7.4, containing 0.02% sodium azide as Preservative and 50% Glycerol. |
| Storage | Store at -20°C. Avoid repeated freeze-thaw cycles. |
| Concentration | 1 mg/ml |
| Clonality | Polyclonal |

Background

| | |
|-------------------------|---|
| Alternative Names | Yellow florescent protein, Enhanced Yellow florescent protein |
| Observed band | N/A |
| Human Gene ID | |
| Human Swiss-Prot Number | N/A |
| Background | Yellow Fluorescent Protein (YFP) is a genetic mutant of green fluorescent protein (GFP) originally derived from the jellyfish <i>Aequorea victoria</i> . Its excitation peak is 514 nm and its emission peak is 527 nm. YFP is a useful tool in cell and molecular biology thanks to its properties useful for fluorescence microscopy. |

Selected Validation Data



Western blot analysis of EYFP Recombinant protein with EYFP
Mouse Polyclonal Antibody diluted at 1) 1:2,000 2) 1:5,000