

mCherry Mouse Polyclonal Antibody

Catalog No: RA20383

Basic Information

Host species	Mouse
Applications	WB, IHC, IF, IP
Species Cross-Reactivity	N/A
Specificity	The mCherry tag antibody can recognize mCherry and mCherry tag fusion proteins.
Recommended dilutions	WB: 1:5,000 IHC: 1:200 IF: 1:200 IP: 1:100 Optimal dilutions should be determined by the end user.

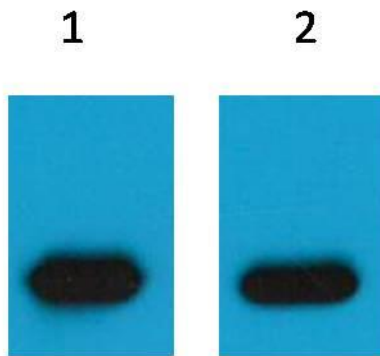
Applications

Formulation	PBS, pH 7.4, containing 0.02% sodium azide as Preservative and 50% Glycerol.
Storage	Store at -20°C. Avoid repeated freeze-thaw cycles.
Concentration	1 mg/ml
Clonality	Polyclonal

Background

Alternative Names	
Observed band	N/A
Human Gene ID	
Human Swiss-Prot Number	N/A
Background	mCherry is a fluorophore (a fluorescent molecule) used in biotechnology as a tracer to follow the flow of fluids, as a marker when tagged to molecules and cells components. mCherry is a monomeric fluorescent construct with peak absorption/emission at 587 nm and 610 nm, respectively. It is resistant to photobleaching and is stable. mCherry is sometimes preferred to other fluorophores due to its colour, as well as its photostability compared to other monomeric fluorophores.

Selected Validation Data



Western blot analysis of mCherry Recombinant protein with
mCherry Mouse Polyclonal Antibody diluted at 1) 1:5,000 2)
1:10,000