

Pan Methyl Lysine Rabbit Polyclonal Antibody

Catalog No: RA20366

Basic Information

Host species	Rabbit
Applications	WB, IHC
Species Cross-Reactivity	ALL
Specificity	The Pan Methylated Lysine Rabbit Polyclonal antibody can detect endogenous Pan Methylated Lysine proteins.
Recommended dilutions	WB 1:1,000-2,000 IHC 1:100-200(Optimal dilutions should be determined by the end user)

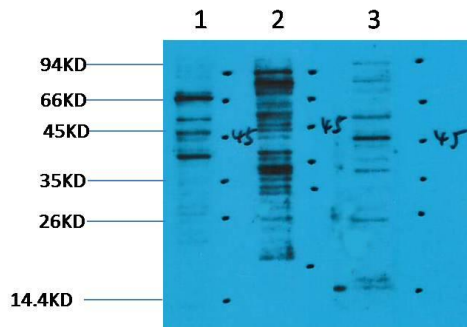
Applications

Formulation	PBS, pH 7.4, containing 0.02% sodium azide as Preservative and 50% Glycerol.
Storage	Store at -20°C. Avoid repeated freeze-thaw cycles.
Concentration	1 mg/ml
Clonality	Polyclonal

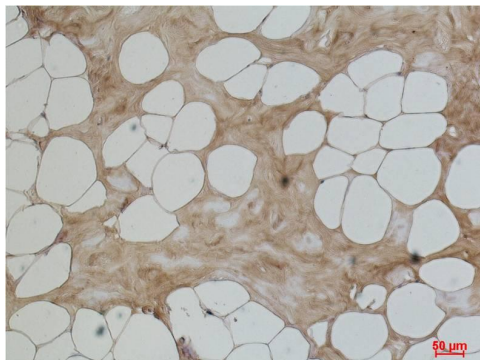
Background

Alternative Names	N/A
Observed band	N/A
Human Gene ID	N/A
Human Swiss-Prot Number	N/A
Background	Many proteins are post translationally modified. Modifications such as phosphorylation, glycosylation, ubiquitination and methylation have been shown to play an important role in the development, physiology and disease of animals and plants.

Selected Validation Data



Western blot analysis of 1) HeLa, 2)3T3, 3) Rat Brain tissue with RA20366 diluted at 1:2,000.



Immunohistochemical analysis of paraffin-embedded Human Breast Carcinoma using Pan Methyl Lysine (RA20366) Rabbit pAb diluted at 1:200.