

Rubisco Mouse Polyclonal Antibody(Large Chain)

Catalog No: RA20362

Basic Information

Host species	Mouse
Applications	WB
Species Cross-Reactivity	Various Plants
Specificity	The Rubisco Mouse Polyclonal Antibody can detects endogenous Rubisco Large Chain protein.
Recommended dilutions	WB: 1:3,000-5,000 Optimal dilutions should be determined by the end user.

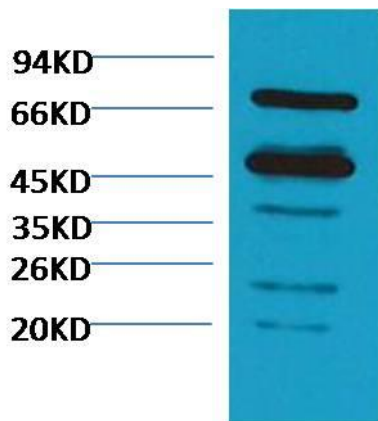
Applications

Formulation	PBS, pH 7.4, containing 0.02% sodium azide as Preservative and 50% Glycerol.
Storage	Store at -20°C. Avoid repeated freeze-thaw cycles.
Concentration	1 mg/ml
Clonality	Polyclonal

Background

Alternative Names	Ribulose bisphosphate carboxylase oxygenase
Observed band	N/A
Human Gene ID	
Human Swiss-Prot Number	N/A
Background	Ribulose-1,5-bisphosphate carboxylase oxygenase, commonly known by the abbreviation RuBisCO, is an enzyme involved in the first major step of carbon fixation, a process by which atmospheric carbon dioxide is converted by plants to energy-rich molecules such as glucose.

Selected Validation Data



Western blot analysis of *Arabidopsis thaliana* with Rubisco Mouse Polyclonal Antibody(Large Chain) diluted at 1:5,000.