

SPHK2 Rabbit Polyclonal Antibody

Catalog No: RA20345

Basic Information

| | |
|--------------------------|---|
| Host species | Rabbit |
| Applications | WB |
| Species Cross-Reactivity | H,M,R |
| Specificity | Antibody can detects endogenous SPHK2 protein. |
| Recommended dilutions | WB:1:1,000-2,000 Optimal dilutions should be determined by the end user. |

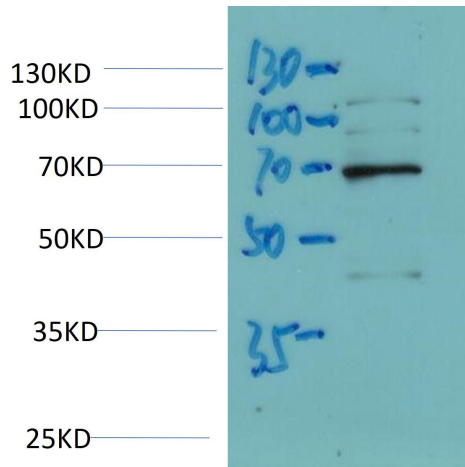
Applications

| | |
|---------------|---|
| Formulation | Antigen Affinity Purified IgG in PBS, pH 7.4, containing 0.02% sodium azide as Preservative and 50% Glycerol. |
| Storage | Store at -20°C. Avoid repeated freeze-thaw cycles. |
| Concentration | 1 mg/ml |
| Clonality | Polyclonal |

Background

| | |
|-------------------------|--|
| Alternative Names | sphingosine kinsase2, SK 2, SPK 2 |
| Observed band | 70 |
| Human Gene ID | 56848 |
| Human Swiss-Prot Number | Q9NRA0 |
| Background | sphingosine kinase 2 (SPHK2) Homo sapiens This gene encodes one of two sphingosine kinase isozymes that catalyze the phosphorylation of sphingosine into sphingosine 1-phosphate. Sphingosine 1-phosphate mediates many cellular processes including migration, proliferation and apoptosis, and also plays a role in several types of cancer by promoting angiogenesis and tumorigenesis. |

Selected Validation Data



Western blot analysis of Mouse Brain Tissue Lysate using SPHK2 Rabbit Polyclonal Antibody diluted at 1:2,000.