

Syndecan-4 Rabbit Rabbit Polyclonal Antibody

Catalog No: RA20344

Basic Information

Host species	Rabbit
Applications	WB
Species Cross-Reactivity	H, M, R
Specificity	The Antibody can detects endogenous Syndecan-4 proteins.
Recommended dilutions	WB: 1:1,000-2,000 Optimal dilutions should be determined by the end user.

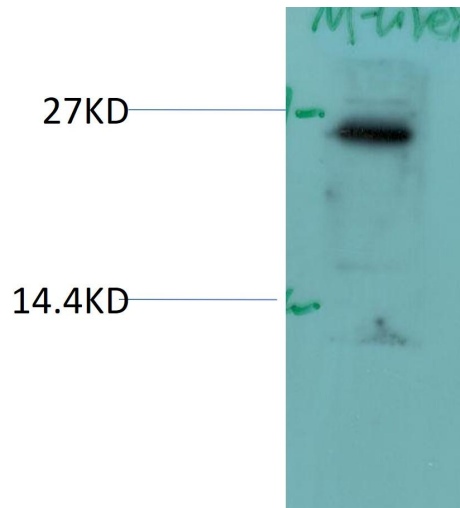
Applications

Formulation	PBS, pH 7.4, containing 0.02% sodium azide as Preservative and 50% Glycerol.
Storage	Store at -20°C. Avoid repeated freeze-thaw cycles.
Concentration	1 mg/ml
Clonality	Polyclonal

Background

Alternative Names	SDC4; YND4; Amphiglycan; Ryudocan core protein
Observed band	26
Human Gene ID	6385
Human Swiss-Prot Number	P31431
Background	The protein encoded by this gene is a transmembrane (type I) heparan sulfate proteoglycan that functions as a receptor in intracellular signaling. The encoded protein is found as a homodimer and is a member of the syndecan proteoglycan family.

Selected Validation Data



Western blot analysis of Mouse Liver Tissue Lysate using
Syndecan-4 Rabbit Polyclonal Antibody diluted at 1:2,000.