

SGT1/ECD Rabbit Polyclonal Antibody

Catalog No: RA20342

Basic Information

Host species	Rabbit
Applications	WB
Species Cross-Reactivity	H, R, M
Specificity	Antibody can detects Human endogenous SGT1/ECD proteins.
Recommended dilutions	WB: 1:2,000-5,000 Optimal dilutions should be determined by the end user.

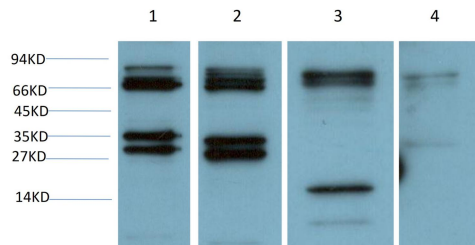
Applications

Formulation	PBS, pH 7.4, containing 0.02% sodium azide as Preservative and 50% Glycerol.
Storage	Store at -20°C. Avoid repeated freeze-thaw cycles.
Concentration	1 mg/ml
Clonality	Polyclonal

Background

Alternative Names	ECD,hSGT1,human suppressor of GCR two,suppressor of GCR2,SGT1 protein
Observed band	~73
Human Gene ID	11319
Human Swiss-Prot Number	O95905
Background	.

Selected Validation Data



Western blot analysis of 1)Hela Cell, 2) 293T Cell, 3)Mouse Brain Tissue, 4) Rat Brain Tissue Lysate using SGT1/ECD Rabbit polyclonal Antibody diluted at 1:2,000.