

PEPC(Phospho Ser15) Rabbit Polyclonal Antibody

Catalog No: RA20329

Basic Information

Host species	Rabbit
Applications	WB
Species Cross-Reactivity	A. comosus, A. thaliana, H. vulgare, J. curcas, M. crystallinum, N. tabacum, Z. mays, T. weissfloggi, P. tricornutum (strain CCAP 1055/1), Synechocystis PCC 6803
Specificity	The PEPC(Phospho Ser15) Antibody can detects endogenous PEPC(Phospho Ser15) protein.
Recommended dilutions	WB: 1:1,000-2,000 Optimal dilutions should be determined by the end user.

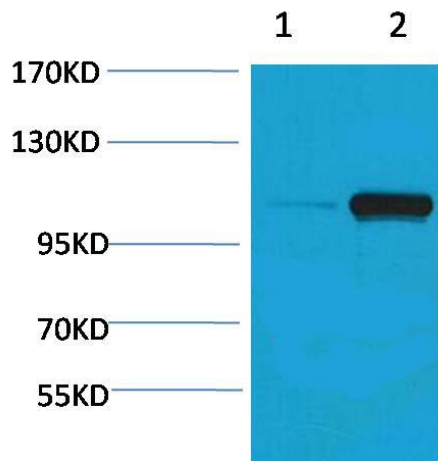
Applications

Formulation	Immunogen Affinity Purified Rabbit IgG, 1mg/ml in PBS pH7.4, containing 0.02% sodium azide as Preservative and 50% Glycerol.
Storage	Store at -20°C. Avoid repeated freeze-thaw cycles.
Concentration	1 mg/ml
Clonality	Polyclonal

Background

Alternative Names	PEPCase 1, PEPCase 3, PEPC 1, PEPC 3, phosphoenolpyruvate carboxylase
Observed band	105-110
Human Gene ID	5183
Human Swiss-Prot Number	P20142
Background	PEPC (phosphoenolpyruvate carboxylase), belongs to an enzyme family of carboxy-lyases that is catalyzing adding fo carbon dioxide to phosphoenolpyruvate (PEP) to form oxaloacetate.

Selected Validation Data



Western blot analysis of Maize 1)Dark, 2)Light, with phospho-PEPC Rabbit pAb diluted at 1:2,000.