

# Glucocorticoid receptor Rabbit Polyclonal Antibody

## Catalog No: RA20326

### Basic Information

Host species	Rabbit
Applications	WB
Species Cross-Reactivity	H,M,R
Specificity	The GR Rabbit Polyclonal antibody detects endogenous GR proteins.
Recommended dilutions	WB: 1:1,000-3,000 Optimal dilutions should be determined by the end user.

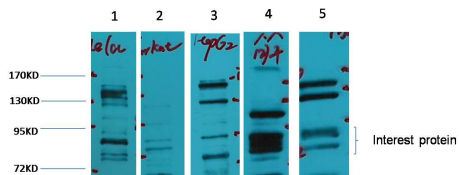
### Applications

Formulation	PBS, pH 7.4, containing 0.02% sodium azide as Preservative and 50% Glycerol.
Storage	Store at -20°C. Avoid repeated freeze-thaw cycles.
Concentration	1 mg/ml
Clonality	Polyclonal

### Background

Alternative Names	
Observed band	80-97
Human Gene ID	2908
Human Swiss-Prot Number	P04150
Background	The glucocorticoid receptor (GR or GCR).The GR is expressed in almost every cell in the body and regulates genes controlling the development, metabolism, and immune response. Because the receptor gene is expressed in several forms, it has many different (pleiotropic) effects in different parts of the body.

## Selected Validation Data



Western blot analysis of 1) HeLa, 2) Jurkat, 3) HepG2, 4) Mouse Liver tissue, 5) Rat Brain tissue, with GR Rabbit pAb diluted at 1:2,000.