

COX1 Cyclooxygenase 1 Rabbit Polyclonal Antibody

Catalog No: RA20324

Basic Information

Host species	Rabbit
Applications	WB, IHC
Species Cross-Reactivity	H
Specificity	The COX1 Rabbit Polyclonal antibody detects endogenous COX1 proteins.
Recommended dilutions	WB: 1:1,000 IHC: 1:100 Optimal dilutions should be determined by the end user.

Applications

Formulation	PBS, pH 7.4, containing 0.02% sodium azide as Preservative and 50% Glycerol.
Storage	Store at -20°C. Avoid repeated freeze-thaw cycles.
Concentration	1 mg/ml
Clonality	Polyclonal

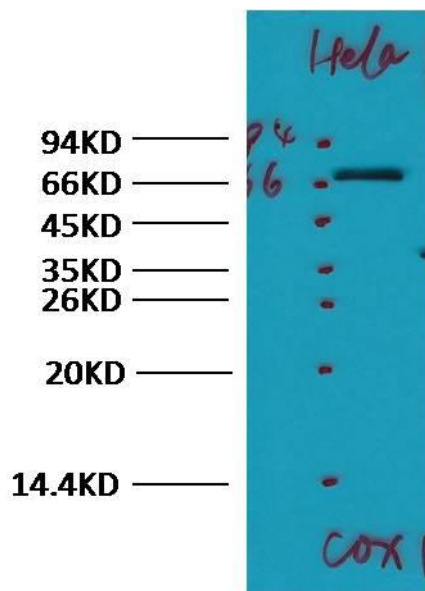
Background

Alternative Names	
Observed band	70
Human Gene ID	5742
Human Swiss-Prot Number	P23219

Background

Cyclooxygenase-1 (COX-1), also known as prostaglandin G/H synthase 1, prostaglandin-endoperoxide synthase 1 or prostaglandin H2 synthase 1, is an enzyme that in humans is encoded by the PTGS1 gene. There are two isozymes of COX encoded by distinct gene products: a constitutive COX-1 (this enzyme) and an inducible COX-2, which differ in their regulation of expression and tissue distribution. The expression of these two transcripts is differentially regulated by relevant cytokines and growth factors. A splice variant of COX-1 termed COX-3 was identified in the CNS of dogs, but does not result in a functional protein in humans. Two smaller COX-1-derived proteins (the partial COX-1 proteins PCOX-1A and PCOX-1B) have also been discovered, but their precise roles are yet to be described.

Selected Validation Data



Western blot analysis of HeLa with COX1 Rabbit Polyclonal antibody diluted at 1:1,000.