

HSD11B1 Rabbit Polyclonal Antibody

Catalog No: RA20323

Basic Information

Host species	Rabbit
Applications	WB, IHC
Species Cross-Reactivity	H, M, R
Specificity	Antibody can detects endogenous HSD11B1 proteins.
Recommended dilutions	WB: 1:1,000-2,000 IHC 1:100-200 Optimal dilutions should be determined by the end user.

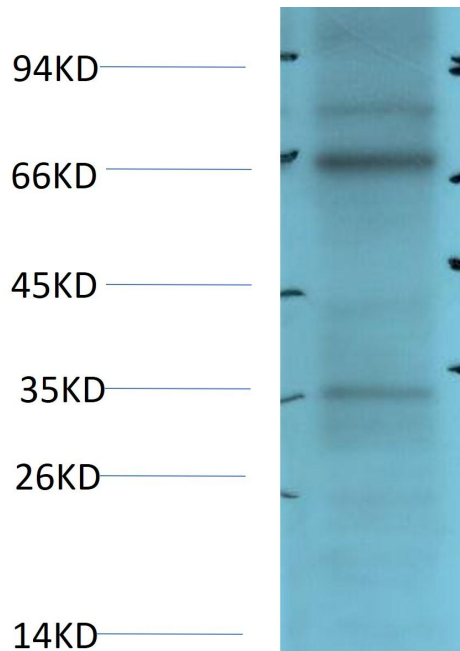
Applications

Formulation	PBS, pH 7.4, containing 0.02% sodium azide as Preservative and 50% Glycerol.
Storage	Store at -20°C. Avoid repeated freeze-thaw cycles.
Concentration	1 mg/ml
Clonality	Polyclonal

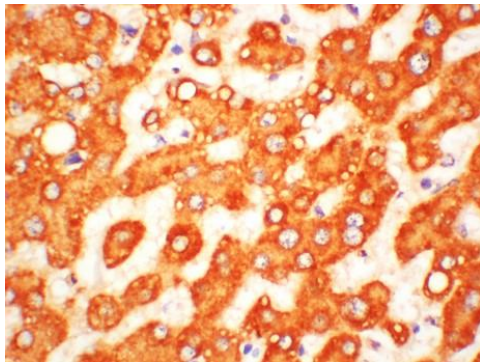
Background

Alternative Names	HSD11B1; HSD11; HSD11L; Corticosteroid 11-beta-dehydrogenase isozyme 1; 11-beta-hydroxysteroid dehydrogenase 1; 11-DH; 11-beta-HSD1
Observed band	35
Human Gene ID	3290
Human Swiss-Prot Number	P28845
Background	hydroxysteroid 11-beta dehydrogenase 1(HSD11B1) Homo sapiens The protein encoded by this gene is a microsomal enzyme that catalyzes the conversion of the stress hormone cortisol to the inactive metabolite cortisone. In addition, the encoded protein can catalyze the reverse reaction, the conversion of cortisone to cortisol. Too much cortisol can lead to central obesity, and a particular variation in this gene has been associated with obesity and insulin resistance in children.

Selected Validation Data



Western blot analysis of 3T3 Cell Lysate using HSD11B1 Rabbit pAb diluted at 1:2,000.



Immunohistochemical analysis of paraffin-embedded Human Liver Tissue using HSD11B1 Rabbit Polyclonal antibody diluted at 1:200.