

TRIM21 Rabbit Polyclonal Antibody

Catalog No: RA20322

Basic Information

Host species	Rabbit
Applications	WB, IHC
Species Cross-Reactivity	H
Specificity	Antibody can detects endogenous TRIM21 proteins.
Recommended dilutions	WB: 1:1,000-2,000 IHC 1:100-200 Optimal dilutions should be determined by the end user.

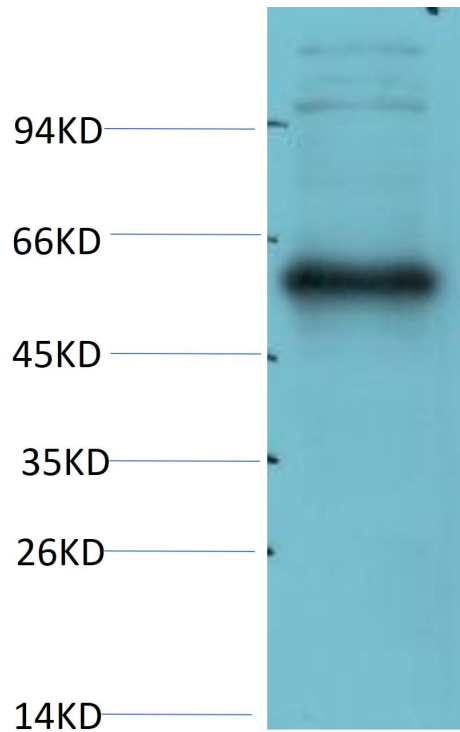
Applications

Formulation	PBS, pH 7.4, containing 0.02% sodium azide as Preservative and 50% Glycerol.
Storage	Store at -20°C. Avoid repeated freeze-thaw cycles.
Concentration	1 mg/ml
Clonality	Polyclonal

Background

Alternative Names	TRIM21 RNF81 RO52 SSA1
Observed band	
Human Gene ID	3290
Human Swiss-Prot Number	P28845
Background	tripartite motif containing 21(TRIM21) Homo sapiens This gene encodes a member of the tripartite motif (TRIM) family. The TRIM motif includes three zinc-binding domains, a RING, a B-box type 1 and a B-box type 2, and a coiled-coil region. The encoded protein is part of the RoSSA ribonucleoprotein, which includes a single polypeptide and one of four small RNA molecules.

Selected Validation Data



Western blot analysis of HeLa Cell Lysate using TRIM21 Rabbit pAb diluted at 1:2,000.