

alpha-Syneuclein Rabbit Polyclonal Antibody

Catalog No: RA20319

Basic Information

| | |
|--------------------------|--|
| Host species | Rabbit |
| Applications | WB, IHC |
| Species Cross-Reactivity | H, M, R |
| Specificity | The antibody detects endogenous alpha-Syneuclein proteins. |
| Recommended dilutions | WB 1:500-2,000 IHC 1:100-200 Optimal dilutions should be determined by the end user. |

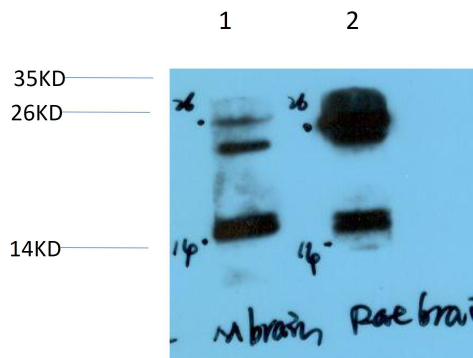
Applications

| | |
|---------------|--|
| Formulation | PBS, pH 7.4, containing 0.02% sodium azide as Preservative and 50% Glycerol. |
| Storage | Store at -20°C. Avoid repeated freeze-thaw cycles. |
| Concentration | 1 mg/ml |
| Clonality | Polyclonal |

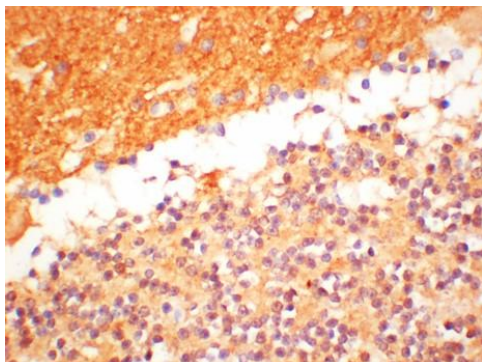
Background

| | |
|-------------------------|---|
| Alternative Names | PARK1, SYN, SNCA, MGC105443, NACP |
| Observed band | 14 |
| Human Gene ID | |
| Human Swiss-Prot Number | P37840 |
| Background | Genetic alterations of SNCA resulting in aberrant polymerization into fibrils, are associated with several neurodegenerative diseases (synucleinopathies). SNCA fibrillar aggregates represent the major non A-beta component of Alzheimer disease amyloid plaque, and a major component of Lewy body inclusions. |

Selected Validation Data



Western blot analysis of 1) Mouse Brain Tissue, 2) Rat Brain Tissue Lysate using alpha-Syneuclein Rabbit Polyclonal Antibody diluted at 1:2,000.



Immunohistochemical analysis of paraffin-embedded Mouse Brain Tissue using alpha-Syneuclein Rabbit Polyclonal antibody diluted at 1:200.