

# HSP90 $\alpha$ + $\beta$ Rabbit Polyclonal Antibody

## Catalog No: RA20317

### Basic Information

Host species	Rabbit
Applications	WB
Species Cross-Reactivity	R, M, H
Specificity	The Antibody can detect endogenous HSP90 $\alpha$ + $\beta$ protein.
Recommended dilutions	WB: 1:500-1,000 Optimal dilutions should be determined by the end user.

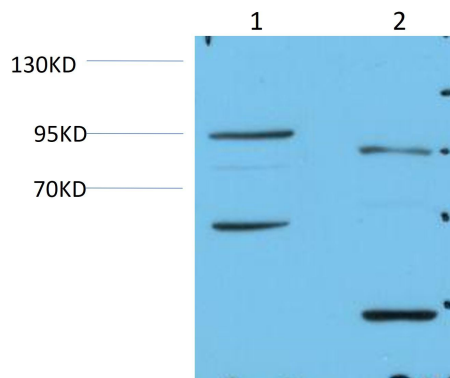
### Applications

Formulation	Antigen Affinity Purified IgG in PBS, pH 7.4, containing 0.02% sodium azide as Preservative and 50% Glycerol.
Storage	Store at -20°C. Avoid repeated freeze-thaw cycles.
Concentration	1 mg/ml
Clonality	Polyclonal

### Background

Alternative Names	EL52, Heat shock 86 KDa, HSP86, HSP90N, HSPC1, Heat shock 90KD protein 1 beta, HS90B, HSP90B, HSP90 beta, HSPCB, HSPC2, HSP 90b, HSP84
Observed band	90, 95
Human Gene ID	
Human Swiss-Prot Number	P07900/P08238
Background	Hsp90 (heat shock protein 90) is a chaperone protein that assists other proteins to fold properly, stabilizes proteins against heat stress, and aids in protein degradation. In mammalian cells, there are two or more genes encoding cytosolic Hsp90 homologues, with the human Hsp90 $\alpha$ showing 85% sequence identity to Hsp90 $\beta$ .

## Selected Validation Data



Western blot analysis of 1) Mouse Brain Tissue, 2) Rat Brain Tissue Lysate using HSP90 $\alpha$ + $\beta$  Rabbit Polyclonal Antibody diluted at 1:1,000.