

# HSP90 $\alpha$ Rabbit Polyclonal Antibody

## Catalog No: RA20315

### Basic Information

Host species	Rabbit
Applications	IHC
Species Cross-Reactivity	H, R, M
Specificity	The Antibody can detect endogenous HSP90 $\alpha$ protein.
Recommended dilutions	IHC: 1:100-200 Optimal dilutions should be determined by the end user.

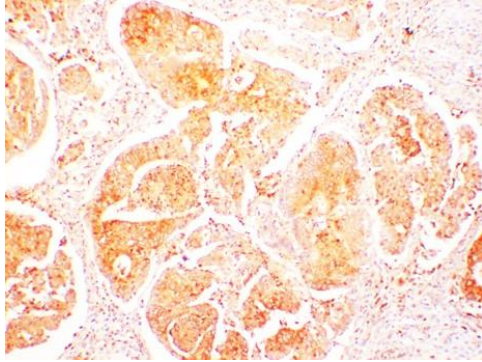
### Applications

Formulation	Antigen Affinity Purified IgG in PBS, pH 7.4, containing 0.02% sodium azide as Preservative and 50% Glycerol.
Storage	Store at -20°C. Avoid repeated freeze-thaw cycles.
Concentration	1 mg/ml
Clonality	Polyclonal

### Background

Alternative Names	EL52 antibody, Heat shock 86 kDa antibody, HSP86 antibody, HSP90N antibody, HSPC1 antibody
Observed band	95
Human Gene ID	3320
Human Swiss-Prot Number	P07900
Background	Hsp90 (heat shock protein 90) is a chaperone protein that assists other proteins to fold properly, stabilizes proteins against heat stress, and aids in protein degradation. In mammalian cells, there are two or more genes encoding cytosolic Hsp90 homologues, with the human Hsp90 $\alpha$ showing 85% sequence identity to Hsp90 $\beta$ .

## Selected Validation Data



Immunohistochemical analysis of paraffin-embedded Human Colon Carcinoma Tissue using HSP90 $\alpha$  Rabbit Polyclonal antibody diluted at 1:200.