

Gab1 Rabbit Polyclonal Antibody (F349)

Catalog No: RA20313

Basic Information

| | |
|--------------------------|---|
| Host species | Rabbit |
| Applications | IHC |
| Species Cross-Reactivity | H, R, M |
| Specificity | The Antibody can detects endogenous Gab1 proteins. |
| Recommended dilutions | IHC: 1:200-500 Optimal dilutions should be determined by the end user. |

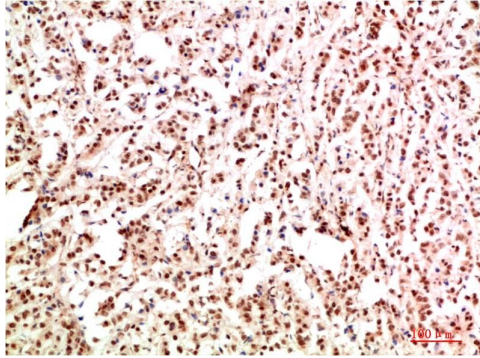
Applications

| | |
|---------------|---|
| Formulation | Antigen Affinity Purified IgG in PBS, pH 7.4, containing 0.02% sodium azide as Preservative and 50% Glycerol. |
| Storage | Store at -20°C. Avoid repeated freeze-thaw cycles. |
| Concentration | 1 mg/ml |
| Clonality | Polyclonal |

Background

| | |
|-------------------------|---|
| Alternative Names | GRB 2 associated binder 1 antibody |
| Observed band | 76 |
| Human Gene ID | 2549 |
| Human Swiss-Prot Number | Q13480 |
| Background | The Gab1 protein is a member of the IRS1-like multisubstrate docking protein family. It is an important mediator of branching tubulogenesis and plays a central role in cellular growth response, transformation and apoptosis. |

Selected Validation Data



Immunohistochemical analysis of paraffin-embedded Human Breast Carcinoma Tissue using Gab1 Rabbit pAb diluted at 1:500