

ATG14L Rabbit Polyclonal Antibody (F313)

Catalog No: RA20300

Basic Information

Host species	Rabbit
Applications	IHC
Species Cross-Reactivity	H, R, M
Specificity	The Antibody can detects endogenous ATG14L proteins.
Recommended dilutions	IHC: 1:200-500 Optimal dilutions should be determined by the end user.

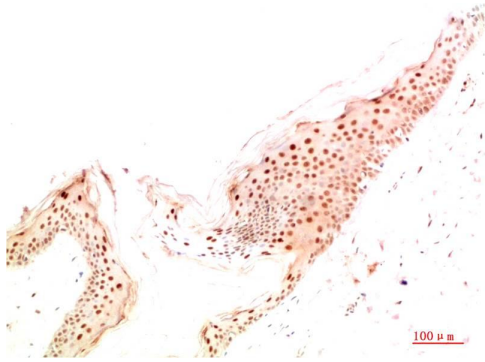
Applications

Formulation	Antigen Affinity Purified IgG in PBS, pH 7.4, containing 0.02% sodium azide as Preservative and 50% Glycerol.
Storage	Store at -20°C. Avoid repeated freeze-thaw cycles.
Concentration	1 mg/ml
Clonality	Polyclonal

Background

Alternative Names	ATG14, KIAA0831, Autophagy-related protein 14-like protein antibody
Observed band	55
Human Gene ID	22863
Human Swiss-Prot Number	Q6ZNE5
Background	ATG14 is a autophage-related protein. The serine/threonine kinase ULK1 phosphorylates Atg14 at Ser29 to promote autophagosome formation.

Selected Validation Data



Immunohistochemical analysis of paraffin-embedded Human Skin Tissue using ATG14 Rabbit pAb diluted at 1:500.