

ATG5 Rabbit Polyclonal Antibody (F307)

Catalog No: RA20296

Basic Information

Host species	Rabbit
Applications	IHC
Species Cross-Reactivity	H, R, M
Specificity	The Antibody can detect endogenous ATG5 proteins.
Recommended dilutions	IHC: 1:100-200 Optimal dilutions should be determined by the end user.

Applications

Formulation	Antigen Affinity Purified IgG in PBS, pH 7.4, containing 0.02% sodium azide as Preservative and 50% Glycerol.
Storage	Store at -20°C. Avoid repeated freeze-thaw cycles.
Concentration	1 mg/ml
Clonality	Polyclonal

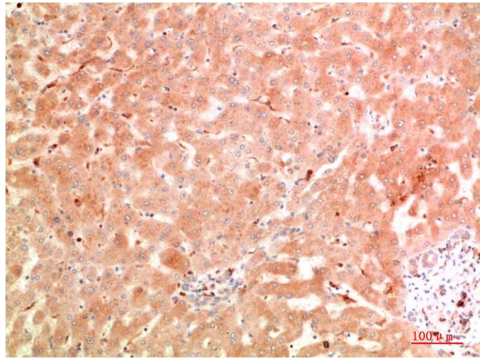
Background

Alternative Names	APG5, APG5L, ASP, Autophagy Cysteine protein 5 antibody
Observed band	32
Human Gene ID	9494
Human Swiss-Prot Number	Q9H1Y0

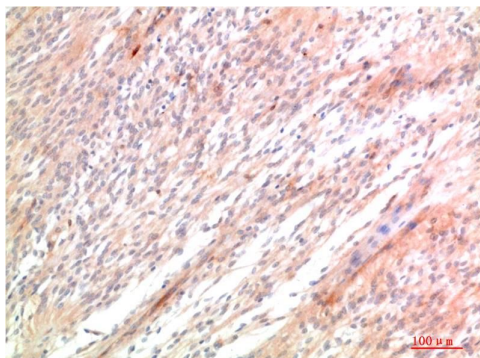
Autophagy is generally activated by conditions of nutrient deprivation but has also been associated with a number of physiological processes including development, differentiation, neurodegeneration, infection, and cancer. Formation of the autophagosome involves a ubiquitin-like conjugation system in which Atg12 is covalently bound to Atg5 and targeted to autophagosome vesicles. This conjugation reaction is mediated by the ubiquitin E1-like enzyme Atg7 and the E2-like enzyme Atg10.

Background

Selected Validation Data



Immunohistochemical analysis of paraffin-embedded Human Hepatocarcinoma Tissue using ATG5 Rabbit pAb diluted at 1:200



Immunohistochemical analysis of paraffin-embedded Human Ovarian Carcinoma Tissue using ATG5 Rabbit pAb diluted at 1:200.