

ATG4a Rabbit Polyclonal Antibody (F303)

Catalog No: RA20293

Basic Information

Host species	Rabbit
Applications	IHC
Species Cross-Reactivity	H, R, M
Specificity	The Antibody can detect endogenous ATG4a proteins.
Recommended dilutions	IHC: 1:100-200 Optimal dilutions should be determined by the end user.

Applications

Formulation	Antigen Affinity Purified IgG in PBS, pH 7.4, containing 0.02% sodium azide as Preservative and 50% Glycerol.
Storage	Store at -20°C. Avoid repeated freeze-thaw cycles.
Concentration	1 mg/ml
Clonality	Polyclonal

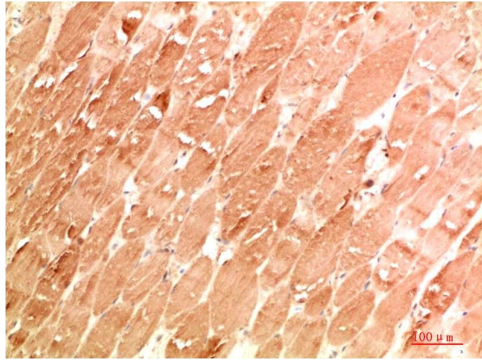
Background

Alternative Names	Apg4a, Atg4a1, Autl2, Cysteine protease ATG4A antibody
Observed band	45
Human Gene ID	115201
Human Swiss-Prot Number	Q8WYN0

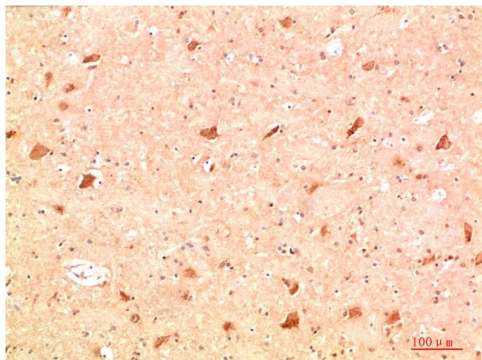
Background

Autophagy is a catabolic process for the autophagosomic-lysosomal degradation of bulk cytoplasmic contents. Control of autophagy was largely discovered in yeast and involves proteins encoded by a set of autophagy-related genes (Atg). Formation of autophagic vesicles requires a pair of essential ubiquitin-like conjugation systems, Atg12-Atg5 and Atg8-phosphatidylethanolamine (Atg8-PE), which are widely conserved in eukaryotes. Numerous mammalian counterparts to yeast Atg proteins have been described, including three Atg8 proteins (GATE-16, GABARAP, and LC3) and four Atg4 homologs (Atg4A/autophagin-2, Atg4B/autophagin-1, Atg4C/autophagin-3, and Atg4D/autophagin-4).

Selected Validation Data



Immunohistochemical analysis of paraffin-embedded Human Skeletal Muscle Tissue using ATG4a Rabbit pAb diluted at 1:200



Immunohistochemical analysis of paraffin-embedded Human Brain Tissue using ATG4a Rabbit pAb diluted at 1:200