

MEK3 Rabbit Polyclonal Antibody(F192)

Catalog No: RA20291

Basic Information

Host species	Rabbit
Applications	IHC
Species Cross-Reactivity	H, R, M
Specificity	Antibody can detects endogenous MEK3 proteins.
Recommended dilutions	IHC: 1:100-200 Optimal dilutions should be determined by the end user.

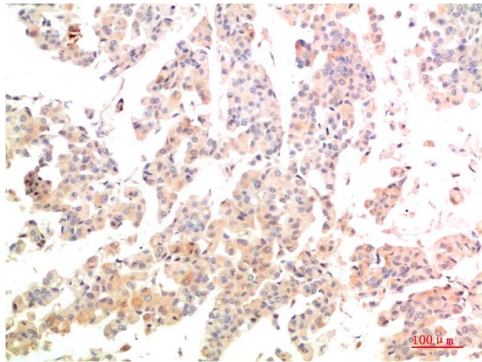
Applications

Formulation	Antigen Affinity Purified IgG in PBS, pH 7.4, containing 0.02% sodium azide as Preservative and 50% Glycerol.
Storage	Store at -20°C. Avoid repeated freeze-thaw cycles.
Concentration	1 mg/ml
Clonality	Polyclonal

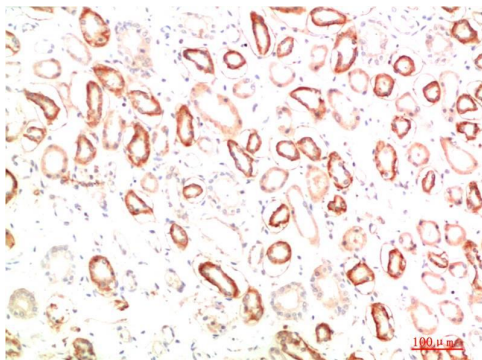
Background

Alternative Names	MAP2K3; MKK3; PRKMK3; Dual specificity mitogen-activated protein kinase kinase 3; MAP kinase kinase 3; MAPKK3; MAPK/ERK kinase 3
Observed band	34,39
Human Gene ID	5606
Human Swiss-Prot Number	P46734
Background	Three alternatively spliced transcript variants of MEK3 encoding distinct isoforms have been reported. Isoform B utilizes a different start codon compared to isoform C resulting in the production of a N-terminal segment of isoform B which is shorter and distinct from isoform C . MEK3b is the predominant form of MEK3 and strongly activates p38 MAP kinase

Selected Validation Data



Immunohistochemical analysis of paraffin-embedded Human Breast Carcinoma Tissue using MEK3 Rabbit pAb diluted at 1:200.



Immunohistochemical analysis of paraffin-embedded Human Breast Carcinoma Tissue using MEK3 Rabbit pAb diluted at 1:200.