

MEK2 Rabbit Polyclonal Antibody(F190)

Catalog No: RA20290

Basic Information

Host species	Rabbit
Applications	WB, IHC
Species Cross-Reactivity	H
Specificity	Antibody can detects endogenous MEK2 proteins.
Recommended dilutions	WB: 1:1,000-2,000 IHC:1:100-200 Optimal dilutions should be determined by the end user.

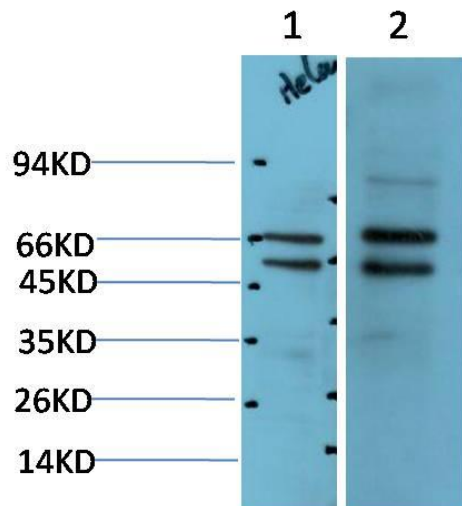
Applications

Formulation	Antigen Affinity Purified IgG in PBS, pH 7.4, containing 0.02% sodium azide as Preservative and 50% Glycerol.
Storage	Store at -20°C. Avoid repeated freeze-thaw cycles.
Concentration	1 mg/ml
Clonality	Polyclonal

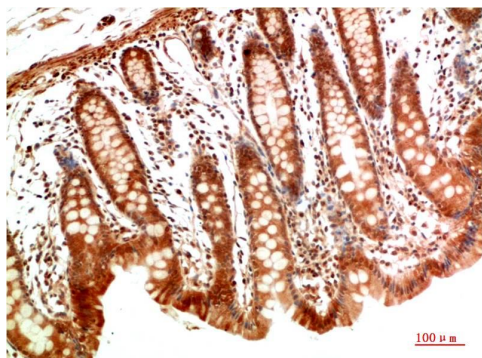
Background

Alternative Names	MAP2K2; MKK2; PRKMK2; Dual specificity mitogen-activated protein kinase kinase 2; MAP kinase kinase 2; MAPKK 2; ERK activator kinase 2; MAPK/ERK kinase 2
Observed band	45
Human Gene ID	5605
Human Swiss-Prot Number	P36507
Background	MEK1 and MEK2, also called MAPK or Erk kinases, are dual-specificity protein kinases that function in a mitogen activated protein kinase cascade controlling cell growth and differentiation.

Selected Validation Data



Western blot analysis of 1) Hela Cell Lysate, 2) 293t Cell Lysate using MEK2 Rabbit pAb diluted at 1:2000.



Immunohistochemical analysis of paraffin-embedded Human Colon Carcinoma Tissue using MEK2 Rabbit pAb diluted at 1:200.