

# HP-1 $\beta$ Rabbit Polyclonal Antibody (HP-1 b)

## Catalog No: RA20279

### Basic Information

Host species	Rabbit
Applications	WB,IHC
Species Cross-Reactivity	H,R,M
Specificity	Antibody can detects endogenous HP-1 $\beta$ proteins.
Recommended dilutions	WB: 1:1,000-5,000    IHC: 1:200-500 Optimal dilutions should be determined by the end user.

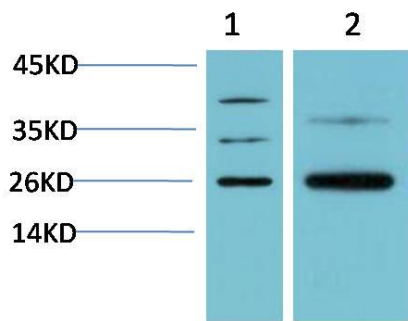
### Applications

Formulation	Antigen Affinity Purified IgG in PBS, pH 7.4, containing 0.02% sodium azide as Preservative and 50% Glycerol.
Storage	Store at -20°C. Avoid repeated freeze-thaw cycles.
Concentration	1 mg/ml
Clonality	Polyclonal

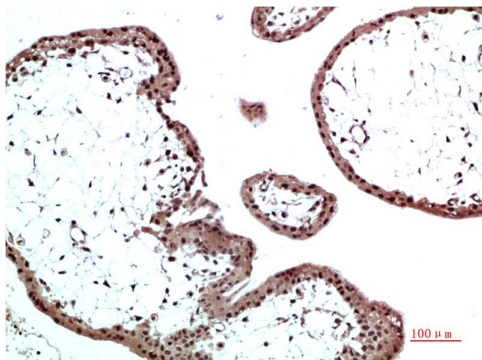
### Background

Alternative Names	CBX, Heterochromatin protein 1 beta, HP1 beta, p25 beta
Observed band	25
Human Gene ID	10951
Human Swiss-Prot Number	P83916
Background	Heterochromatin protein 1 (HP1) is a family of heterochromatic adaptor molecules involved in both gene silencing and higher order chromatin structure. All three HP1 family members ( $\alpha$ , $\beta$ , and $\gamma$ ) are primarily associated with centromeric heterochromatin.

## Selected Validation Data



Western blot analysis of 1) Hela Cell Lysate, 2) Rat Brain Tissue Lysate using HP-1 $\beta$ /CBX1 Rabbit pAb diluted at 1:5000.



Immunohistochemical analysis of paraffin-embedded Human Placenta Tissue using HP-1 $\beta$ /CBX1 Rabbit pAb diluted at 1:500