

# HP-1 $\alpha$ Rabbit Polyclonal Antibody(HP-1 a)

## Catalog No: RA20278

### Basic Information

|                          |  |
|--------------------------|--|
| Host species             | Rabbit   |
| Applications             | WB,IHC   |
| Species Cross-Reactivity | H,R,M  |
| Specificity              | Antibody can detects endogenous HP-1 $\alpha$ proteins.  |
| Recommended dilutions    | WB: 1:1,000-2,000    IHC: 1:200-500<br>Optimal dilutions should be determined by the end user. |

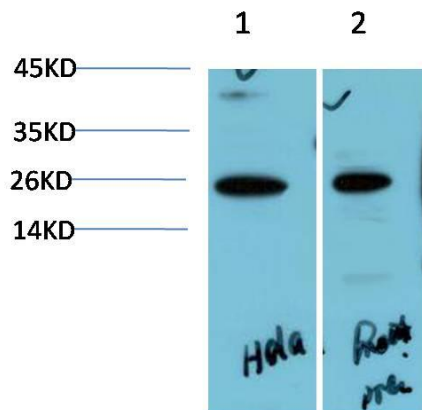
### Applications

|               |   |
|---------------|---|
| Formulation   | Antigen Affinity Purified IgG in PBS, pH 7.4, containing 0.02% sodium azide as Preservative and 50% Glycerol. |
| Storage       | Store at -20°C. Avoid repeated freeze-thaw cycles.  |
| Concentration | 1 mg/ml   |
| Clonality     | Polyclonal  |

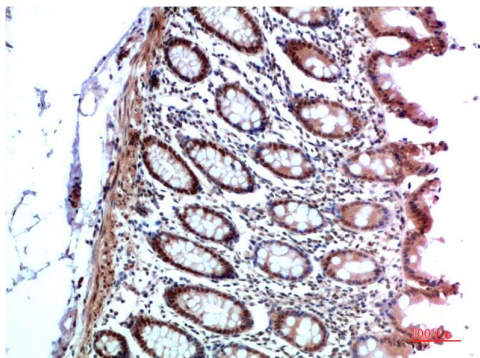
### Background

|                         |  |
|-------------------------|--|
| Alternative Names       | Antigen p25, CBX5, HEL25, Heterochromatin protein 1  |
| Observed band           | 22   |
| Human Gene ID           | 23468  |
| Human Swiss-Prot Number | P45973   |
| Background              | Heterochromatin protein 1 (HP1) is a family of heterochromatic adaptor molecules involved in both gene silencing and higher order chromatin structure. All three HP1 family members ( $\alpha$ , $\beta$ , and $\gamma$ ) are primarily associated with centromeric heterochromatin. |

Selected Validation Data



Western blot analysis of 1) Hela Cell Lysate, 2) Rat Brain Tissue Lysate using HP-1a Rabbit pAb diluted at 1:2000.



Immunohistochemical analysis of paraffin-embedded Human Colon Carcinoma Tissue using HP-1 $\alpha$  Rabbit pAb diluted at 1:500.