

# MAPK(ERK1 2) Rabbit Polyclonal Antibody(F135)

**Catalog No: RA20276**

## Basic Information

Host species	Rabbit
Applications	WB,IHC
Species Cross-Reactivity	H,R,M
Specificity	Antibody can detects endogenous P44/42 MAPK(ERK1/2) proteins.
Recommended dilutions	WB: 1:1,000-2,000    IHC: 1:50-100 Optimal dilutions should be determined by the end user.

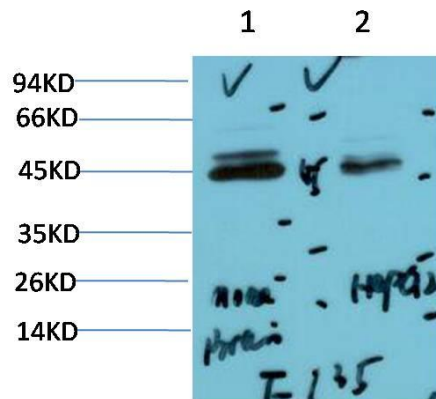
## Applications

Formulation	Antigen Affinity Purified IgG in PBS, pH 7.4, containing 0.02% sodium azide as Preservative and 50% Glycerol.
Storage	Store at -20°C. Avoid repeated freeze-thaw cycles.
Concentration	1 mg/ml
Clonality	Polyclonal

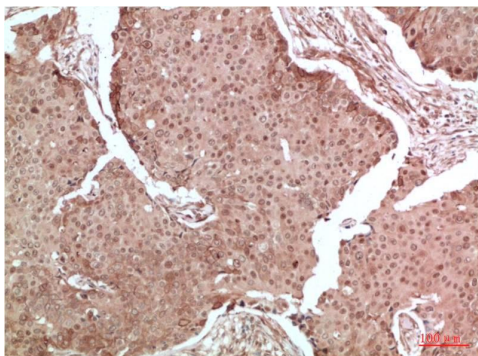
## Background

Alternative Names	MAPK, Mitogen-activated protein Kinase, PRKM2,MK01
Observed band	44,42
Human Gene ID	
Human Swiss-Prot Number	P27361/P28482
Background	Mitogen-activated protein kinases (MAPKs) are a widely conserved family of serine/threonine protein kinases involved in many cellular programs such as cell proliferation, differentiation, motility, and death. The p44/42 MAPK (Erk1/2) signaling pathway can be activated in response to a diverse range of extracellular stimuli including mitogens, growth factors, and cytokines and is an important target in the diagnosis and treatment of cancer.

Selected Validation Data



Western blot analysis of 1) Mouse Brain Tissue Lysate, 2) HepG2 Cell Lysate using ERK1/2 Rabbit pAb diluted at 1:2000.



Immunohistochemical analysis of paraffin-embedded Human Breast Carcinoma Tissue using ERK1/2 Rabbit pAb diluted at 1:100