

NM23A Rabbit Polyclonal Antibody(NM23)

Catalog No: RA20268

Basic Information

Host species	Rabbit
Applications	IHC
Species Cross-Reactivity	H,R,M
Specificity	The antibody can detects endogenous NM23A proteins.
Recommended dilutions	IHC: 1:200-500 Optimal dilutions should be determined by the end user.

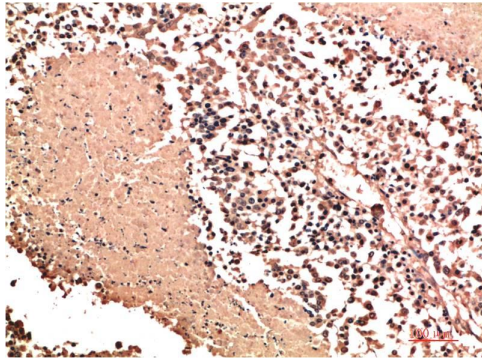
Applications

Formulation	Antigen Affinity Purified IgG in PBS, pH 7.4, containing 0.02% sodium azide as Preservative and 50% Glycerol.
Storage	Store at -20°C. Avoid repeated freeze-thaw cycles.
Concentration	1 mg/ml
Clonality	Polyclonal

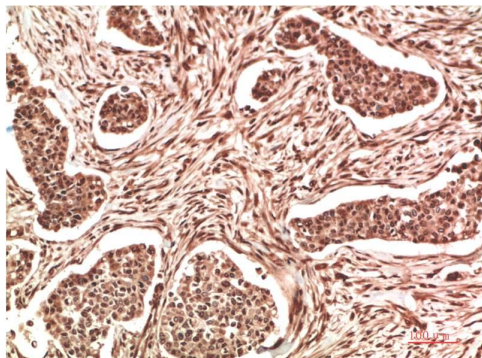
Background

Alternative Names	AWD,NME1,GAAD,NBS,NDKA,Nucleoside diphosphate kinase A antibody
Observed band	17
Human Gene ID	4830
Human Swiss-Prot Number	P15531
Background	Members of the NDK/NME/NM23 kinase family inhibit metastasis in a variety of tumor cell types. All NDK/NME/NM23 proteins possess nucleoside diphosphatase kinase (NDK) activity and catalyze the phosphorylation of nucleoside diphosphate to the corresponding nucleoside triphosphate to regulate a diverse array of cellular events.

Selected Validation Data



Immunohistochemical analysis of paraffin-embedded Human Lung Carcinoma Tissue using NM23A Rabbit pAb diluted at 1:500.



Immunohistochemical analysis of paraffin-embedded Human Stomach Carcinoma Tissue using NM23A Rabbit pAb diluted at 1:500.