

CD10 Rabbit Polyclonal Antibody (CD10)

Catalog No: RA20267

Basic Information

Host species	Rabbit
Applications	IHC
Species Cross-Reactivity	H, R, M
Specificity	The CD10 Rabbit Polyclonal Antibody can detect endogenous CD10 proteins.
Recommended dilutions	IHC: 1:200-500 Optimal dilutions should be determined by the end user.

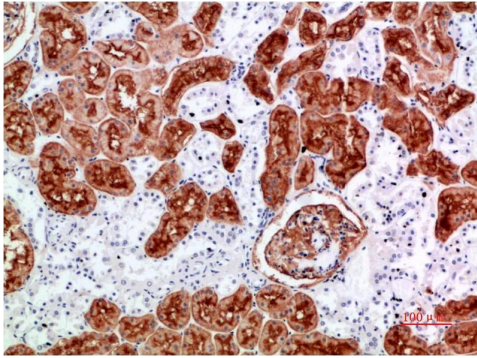
Applications

Formulation	Antigen Affinity Purified IgG in PBS, pH 7.4, containing 0.02% sodium azide as Preservative and 50% Glycerol.
Storage	Store at -20°C. Avoid repeated freeze-thaw cycles.
Concentration	1 mg/ml
Clonality	Polyclonal

Background

Alternative Names	CALLA, Enkephalinase, MME, NEP, Neutral endopeptidase antibody
Observed band	85
Human Gene ID	4311
Human Swiss-Prot Number	P08473
Background	CD10 is a zinc-dependent metalloprotease enzyme that degrades a number of small secreted peptides, most notably the amyloid beta peptide whose abnormal misfolding and aggregation in neural tissue has been implicated as a cause of Alzheimer's disease. Synthesized as a membrane-bound protein, the neprilysin ectodomain is released into the extracellular domain after it has been transported from the Golgi apparatus to the cell surface. In neurons, neprilysin is regulated by the protein nicastrin, a component of the gamma secretase complex that performs a necessary step in processing amyloid precursor protein to amyloid beta.

Selected Validation Data



Immunohistochemical analysis of paraffin-embedded Human Kidney Tissue using CD10 (TDY650) Rabbit pAb diluted at 1:500.