

Met Rabbit Polyclonal Antibody(c-met)

Catalog No: RA20264

Basic Information

Host species	Rabbit
Applications	WB, IHC
Species Cross-Reactivity	H, R, M
Specificity	Antibody can detects endogenous Pro-Met and mature Met protein.
Recommended dilutions	WB: 1:1,000-2,000 IHC: 1:200-500 Optimal dilutions should be determined by the end user.

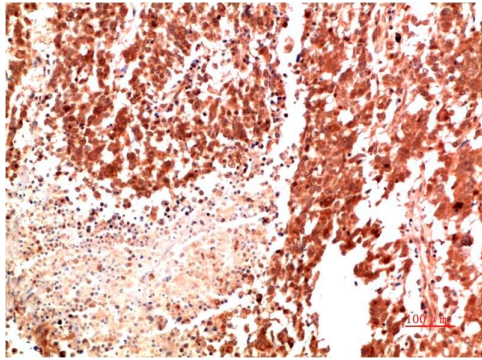
Applications

Formulation	Antigen Affinity Purified IgG in PBS, pH 7.4, containing 0.02% sodium azide as Preservative and 50% Glycerol.
Storage	Store at -20°C. Avoid repeated freeze-thaw cycles.
Concentration	1 mg/ml
Clonality	Polyclonal

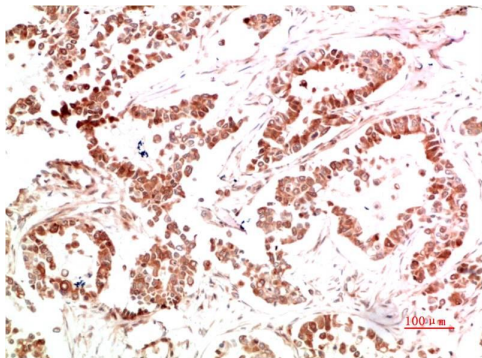
Background

Alternative Names	HGF, c-Met, tyrosine-protein kinase, oncogene met
Observed band	130170
Human Gene ID	4233
Human Swiss-Prot Number	P08581
Background	Met, a high affinity tyrosine kinase receptor for hepatocyte growth factor (HGF, also known as scatter factor) is a disulfide-linked heterodimer made of 45 kDa α - and 145 kDa β -subunits.

Selected Validation Data



Immunohistochemical analysis of paraffin-embedded Human Lung Carcinoma Tissue using Met Rabbit pAb diluted at 1:500.



Immunohistochemical analysis of paraffin-embedded Human Stomach Carcinoma Tissue using Met Rabbit pAb diluted at 1:500.